



Smart Villages

Results from the ENRD Thematic Group

Enrique Nieto

ENRD Contact Point



Smart Villages

Smart Villages Video

[https://youtu.be/
ckB71hb0kx0](https://youtu.be/ckB71hb0kx0)



Smart Villages



Jobs

Basic services

Digital

Social

Challenges

Opportunities

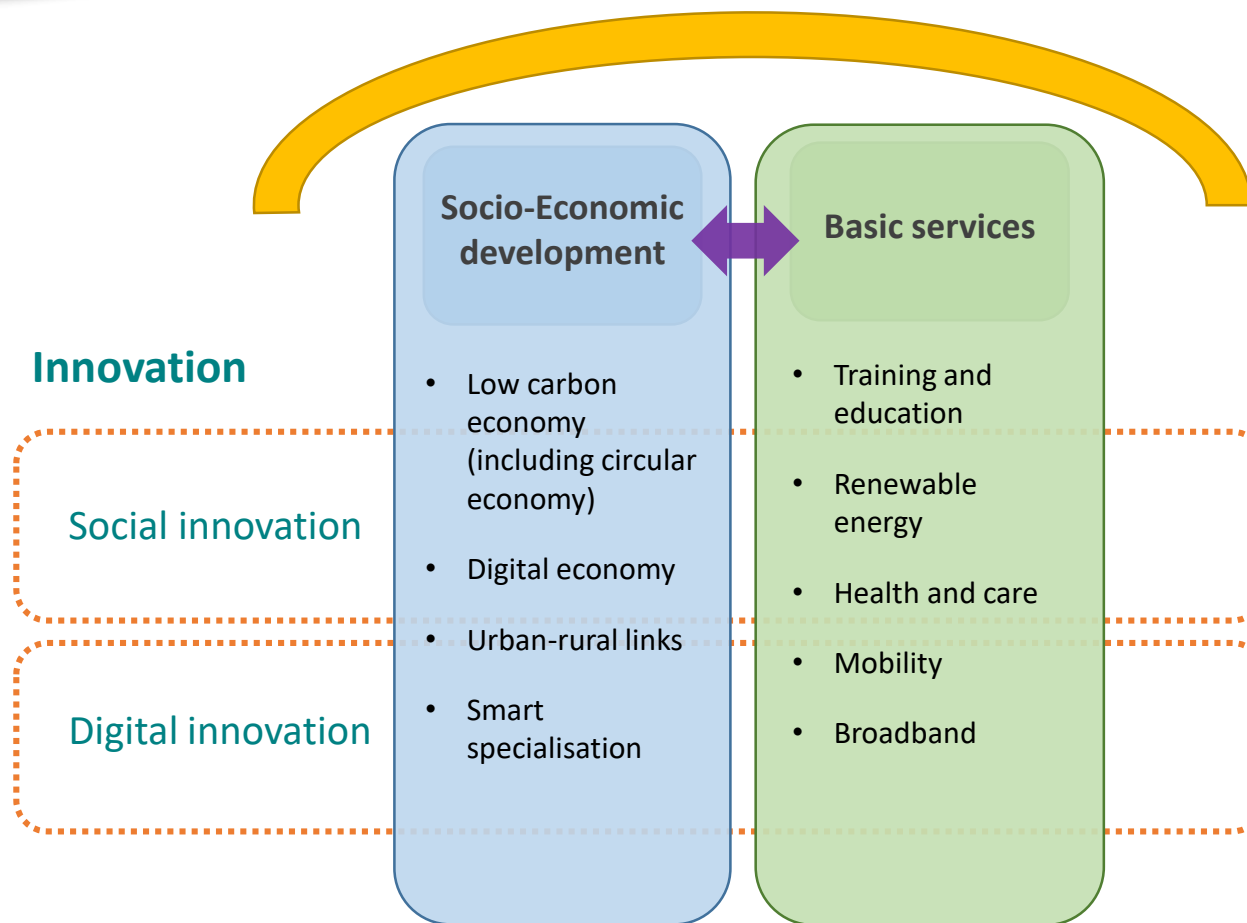
Villages

Cooperation and
partnerships

People

Strategic

Smart Villages Strategy + vision



Smart Villages

**There is no one model for
Smart Villages**

**It is a process, all villages
can be Smart**



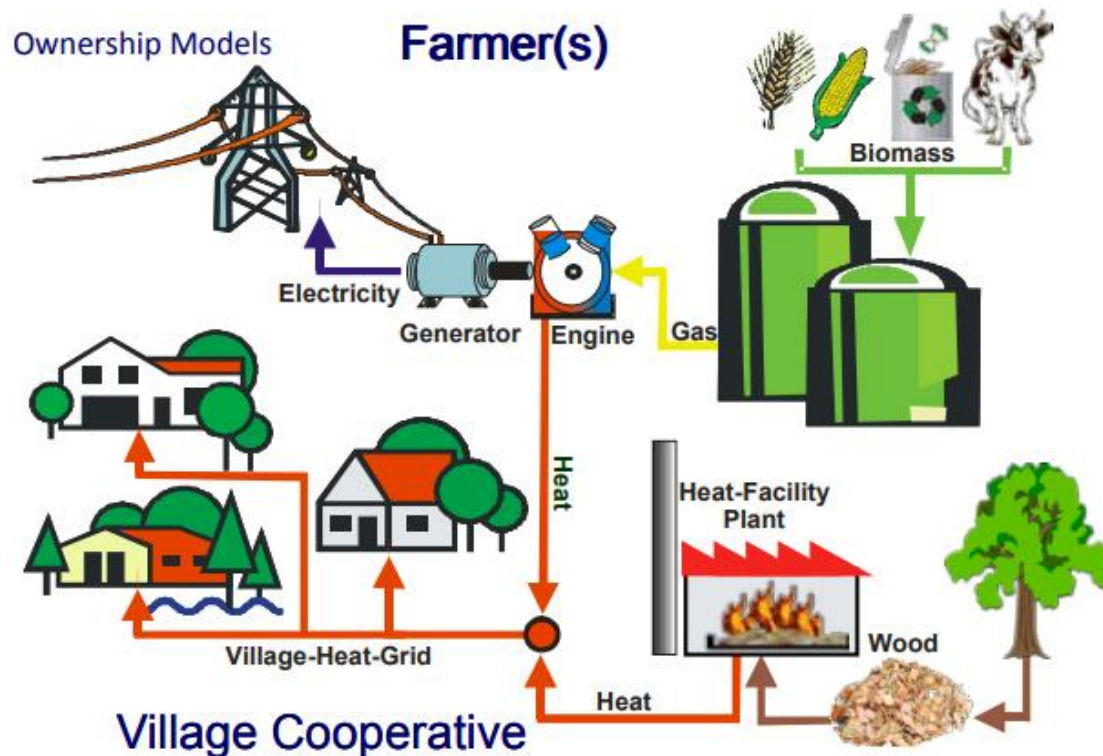
Arctic Smart Rural Community (Lapland, Finland)

- One of the most sparsely populated areas;
- Arctic Smartness brand = bottom up approach to smart specialization;
- Identify capital outflow from villages on energy and food;
- Smart strategies for local production and adding value;
- Integrated action on education, entrepreneurship, investment in food and energy hubs, procurement, R+D;



- Strong stakeholder involvement from village + local (LEADER) to regional levels

Bioenergy Village Germany



| Financing | EUR |
|------------------------------------------|------------------|
| Cooperative Shares | 300 000 |
| Cooperative Loans | 1 500 000 |
| Federal Government – <i>Subsidies</i> | 500 000 |
| LEADER | 200 000 |
| Total | 2 500 000 |

Source: Leader Göttingerland



European Network for
Rural Development

...and many more local projects

Broadband Fibre in Östra Bräcke



Smart Village of the
Future - Project
Ruhtinansalmi



easy-to-access mobile medical service



An on-demand rural bus
service in rural Wales



On-line Support for
Promotion of Local
Businesses



Socially Responsible Wine
Tourism



Local Computer Courses for
young and old



Innovative rural
learning
facilities tackle youth
depopulation



Geoparks bringing
together local
business through
quality parks



Quality of Life
through
Proximity





Drivers for Smart Villages

Challenges

1. **Depopulation and low density population**
2. **Cuts and centralisation of public services**

Opportunities

3. **Transition to a low carbón economy** and circular
4. **Digital transformation** of the rural economy
5. **Urban rural linkages**

**Social
Innovation**

National and regional strategies

Challenges



Maintaining the quality of life in the face of **depopulation**
(*Italian Inner Area Strategy*)

Opportunities



Promoting a **digital transformation** (*Finnish Smart Countryside Initiative. German Digital Villages*)



Urban rural linkages (*French Contrats de Reciprocité*)



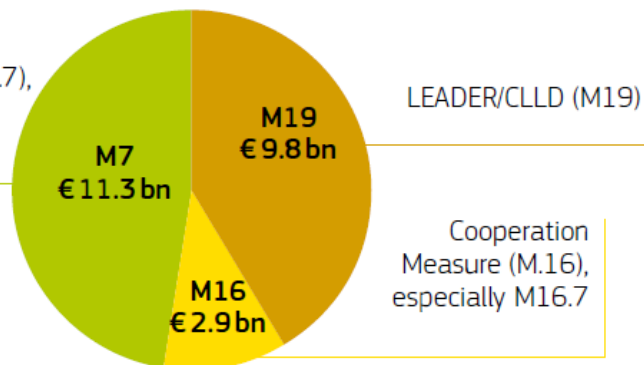
All are just starting

There are a wide range of EU tools:

- EAFRD

Figure 1. RDP support for social and digital innovation

Basic services
and village renewal (M.7),
especially M7.1 - 7.4

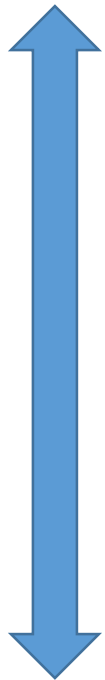


Based on SFC data, April 2018

| STAGE | RDP MEASURES ⁽³⁾ |
|---------------------------------|-----------------------------|
| Bottom-up planning | M7, M19 |
| Animation and technical support | M19, M16 |
| Finance for innovation | M7, M19, M6, M4 |
| Coordination | All |

Current European tools

There are a wide range of EU tools:

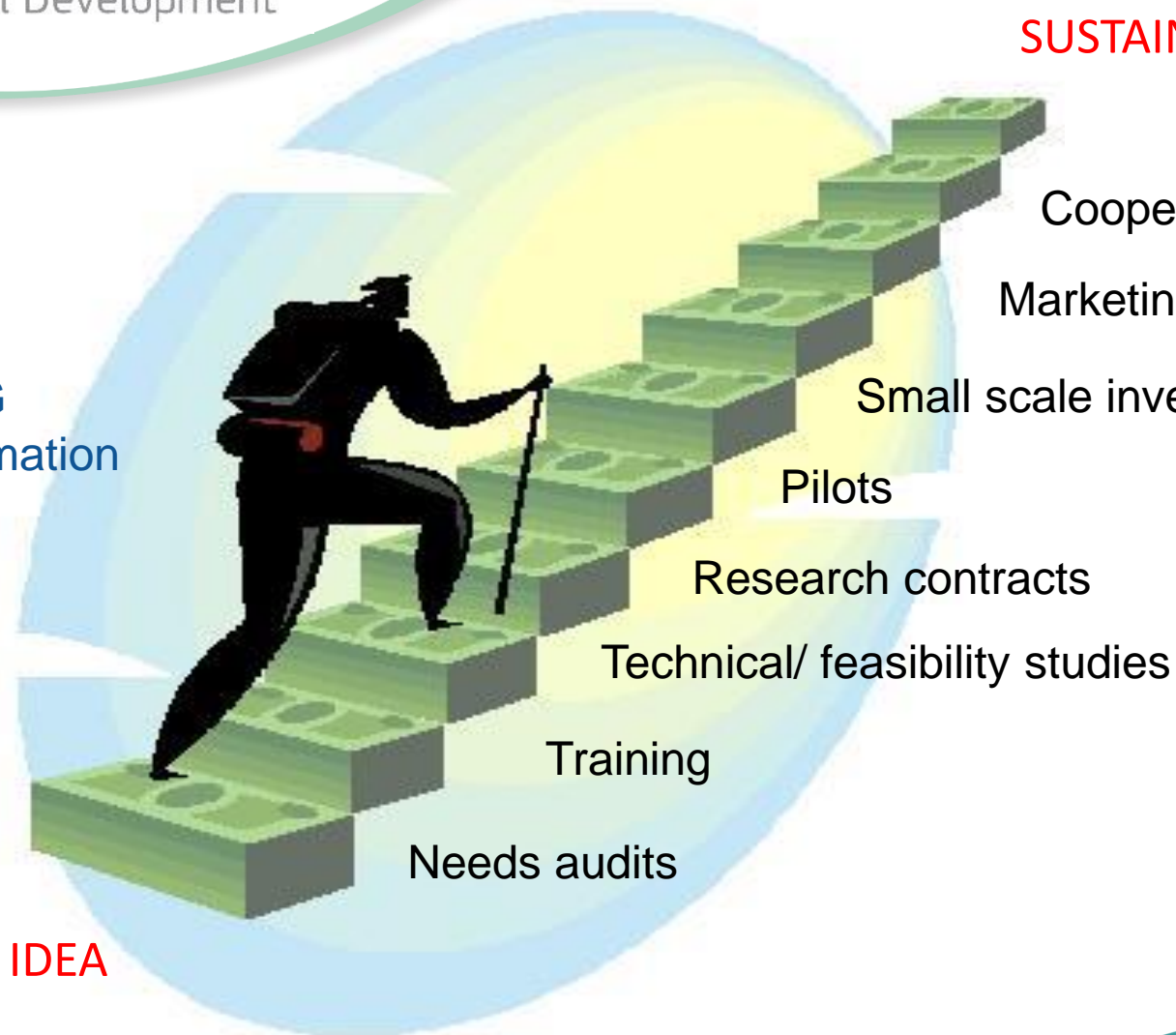


- EAFRD
- ESIF (ERDF, ESF, EMFF)
- ITIs
- Smart Specialisation Strategies(RIS3)
- INTERREG
- Horizon 2020
- Financial Instruments
- Others ...

LEADER'S ROLE IN PREPARING THE GROUND

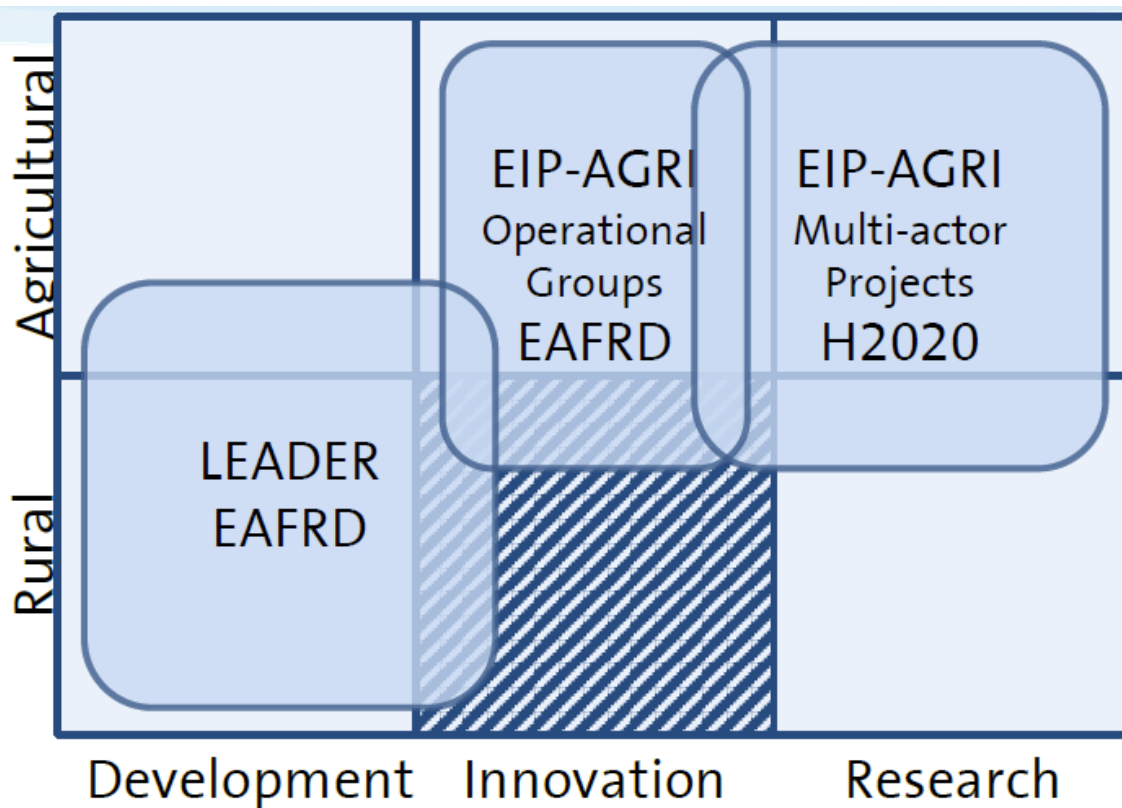
SUSTAINABILITY –SCALE UP

LAG
Animation



Community
Contribution

Links and gaps in instruments for rural Innovation



Future European tools



KEY FEATURES

Minimum budget ring-fencing of **total EAFRD** contribution:

- **30%** for interventions addressing the three environmental/ climate objectives
- **5%** for LEADER

Mandatory risk management tools and Risk Management Strategy

Easier to plan locally led schemes and result based schemes

Higher support rates for investment

Digitisation strategy to be included in the CAP plan

Possibility of using **financial instruments** (incl. working capital), also in combination with grants

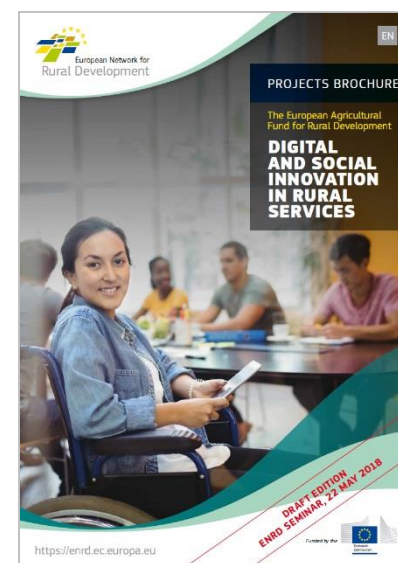
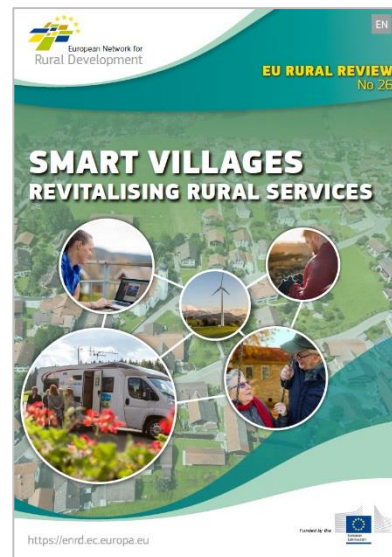
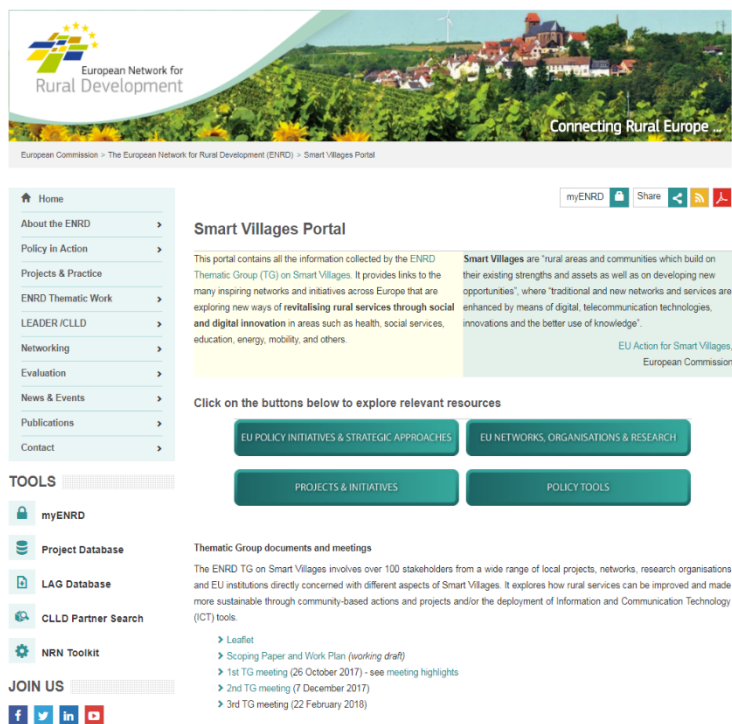
Increase of the **maximum amount of aid for the installation of young farmers** (up to EUR 100.000)

Simpler way of ensuring coherence with other EU funds

100% support rate + global projects for cooperation (incl. LEADER)
SV results indicator

Smart Villages Portal

- Rural Review on Smart Villages
- Project Brochure on Digital and Social innovation



subscribe@enrd.eu

Thank you very much!

<https://enrd.ec.europa.eu>



Like the
ENRD Facebook page



Follow **@ENRD_CP**
on Twitter



Watch **EURural** videos
on YouTube



Join the **ENRD** LinkedIn
discussion group

ENRD Contact Point
Rue de la Loi/Wetstraat, 38 (bte 4)
1040 Bruxelles/Brussel
BELGIQUE/BELGIË
Tel. +32 2 801 38 00
info@enrd.eu



European Network for
Rural Development