



Tartumaa Arendusselts

SECAD



**LEADER transnational cooperation project and
17th Summer Academy joint seminar:**

**"Creating innovation and smart solutions
for sustainable local development"**

Tartu, 17.-21.09.2018



Tartumaa Arendusselts

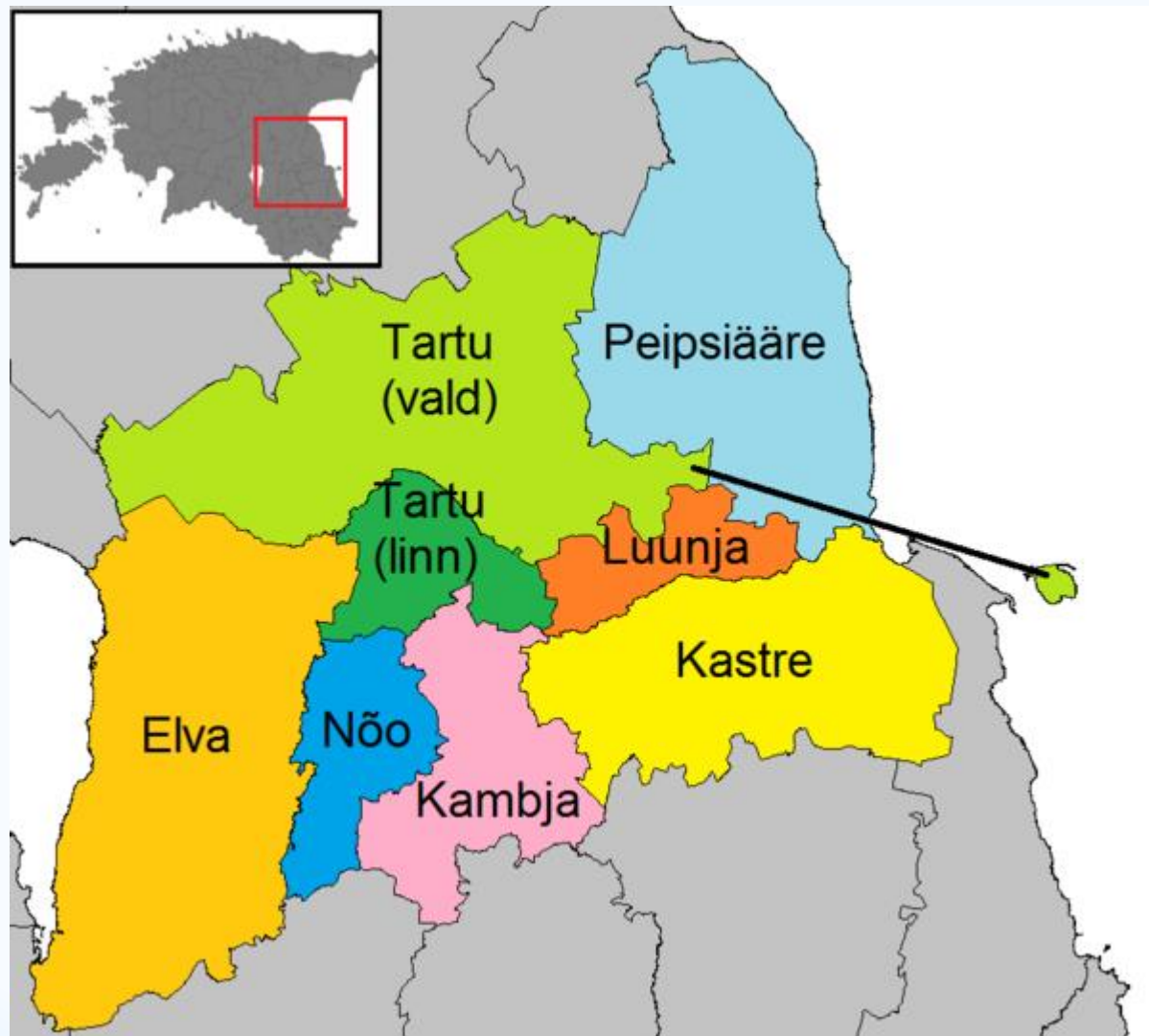
**Welcome to
Tartu County!**





Main features

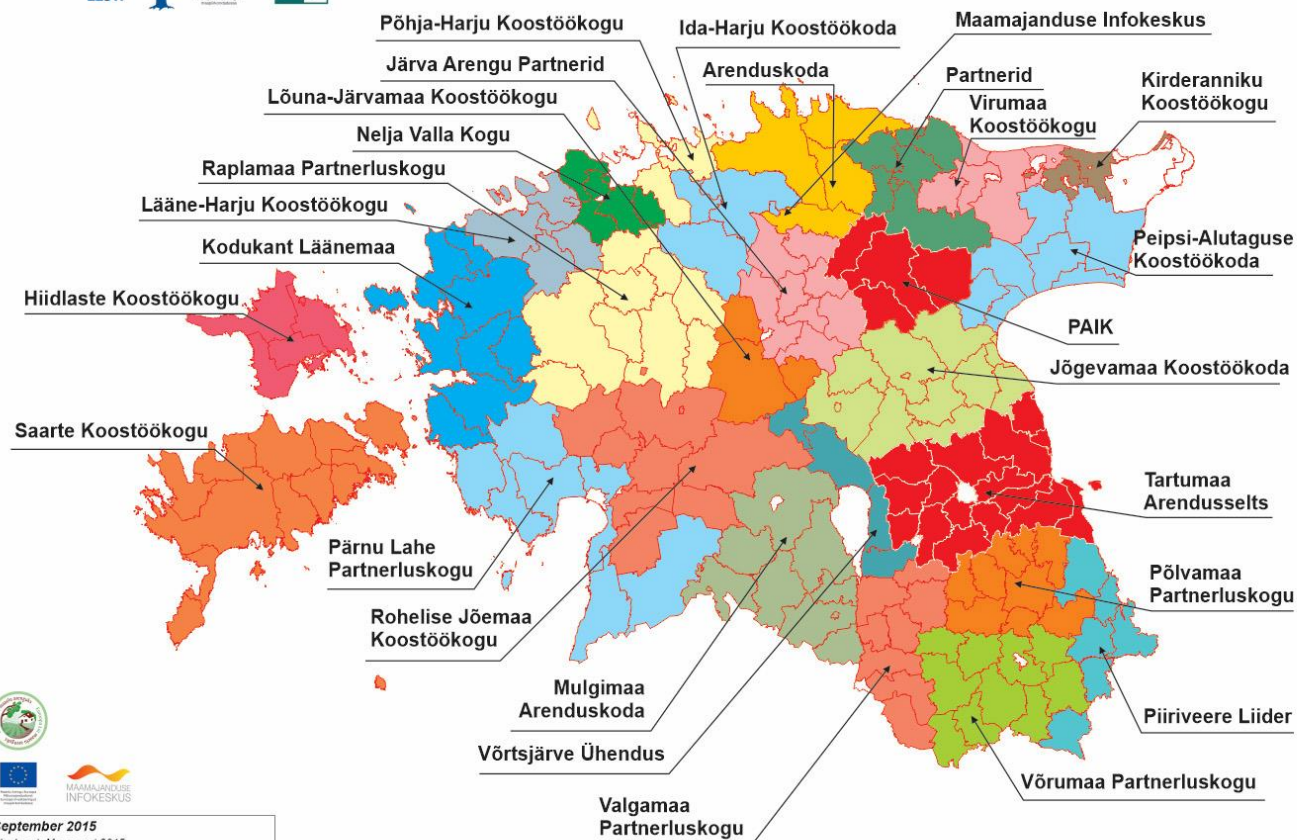
- Area - 2992,7 km² (6,9% Estonian territory)
- Population - 150 167, density 50/km²
- Rich in nature - 2 biggest lakes Peipsi and Võrtsjärv, only navigable river Emajõgi 100 km
- Nature preserves 10% of territory
- 1/3 forest, 1/3 cultivated land, 1/4 wetlands
- Tartu University 1632
- Estonian Song Festival 1869
- Tartu Peace Treaty 1920
- Estonian National Museum 1909, 2016
- 8 local governments - 1 urban, 7 rural



Municipalities of Tartu County since 2018

Economical features

- 6000 companies and 2000 self-employed - micro-businesses and SMEs, only 5 companies with more than 250 employees
- Service sector provides 2/3 of jobs (mainly education, medicine, Tartu University Clinics with 3000 employees)
- Unemployment rate 2-3% recent years
- Typical products are furniture, foodstuffs, clothes, building materials, glass and plastics
- Main export target countries are Finland, Germany, Latvia and Russia
- Knowledge intensive production - biotechnology and ITC
- In order to facilitate innovation and technology transfer, Tartu Science Park is offering incubation and consultation services



September 2015

Aluskaart: Maa-amet 2015

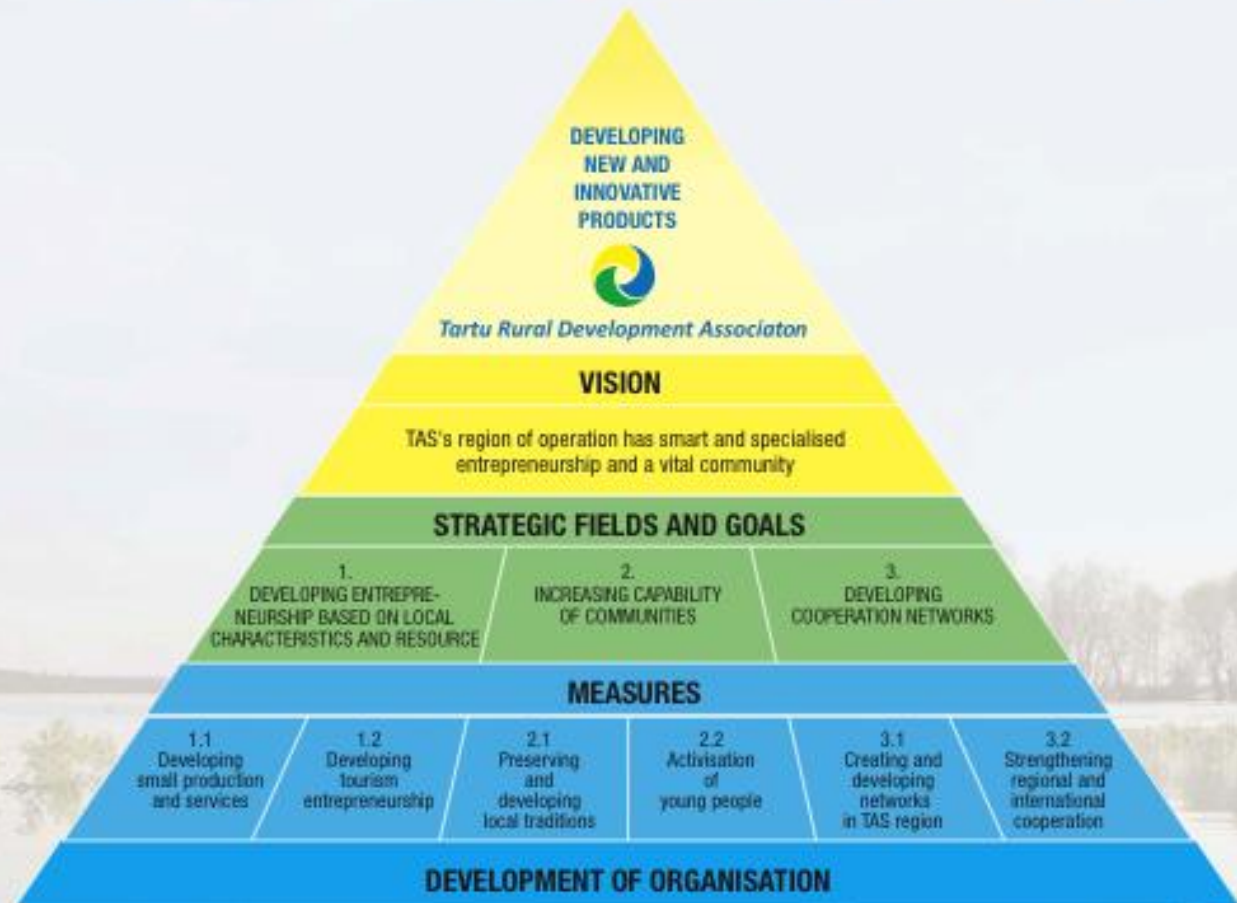
Andmed: Maamajanduse Infokeskus

Local Action Groups in Estonia

Overview of fulfilling the 2008–2013 strategy

- During the 2009-2014 period **1,272 project** applications were submitted to TAS (in the total sum of **13.3 mln euros**).
- **489** projects were carried out (for a total support sum of **4.06 mln euros**).
- The total budget of TAS was **5.09 mln euros**.

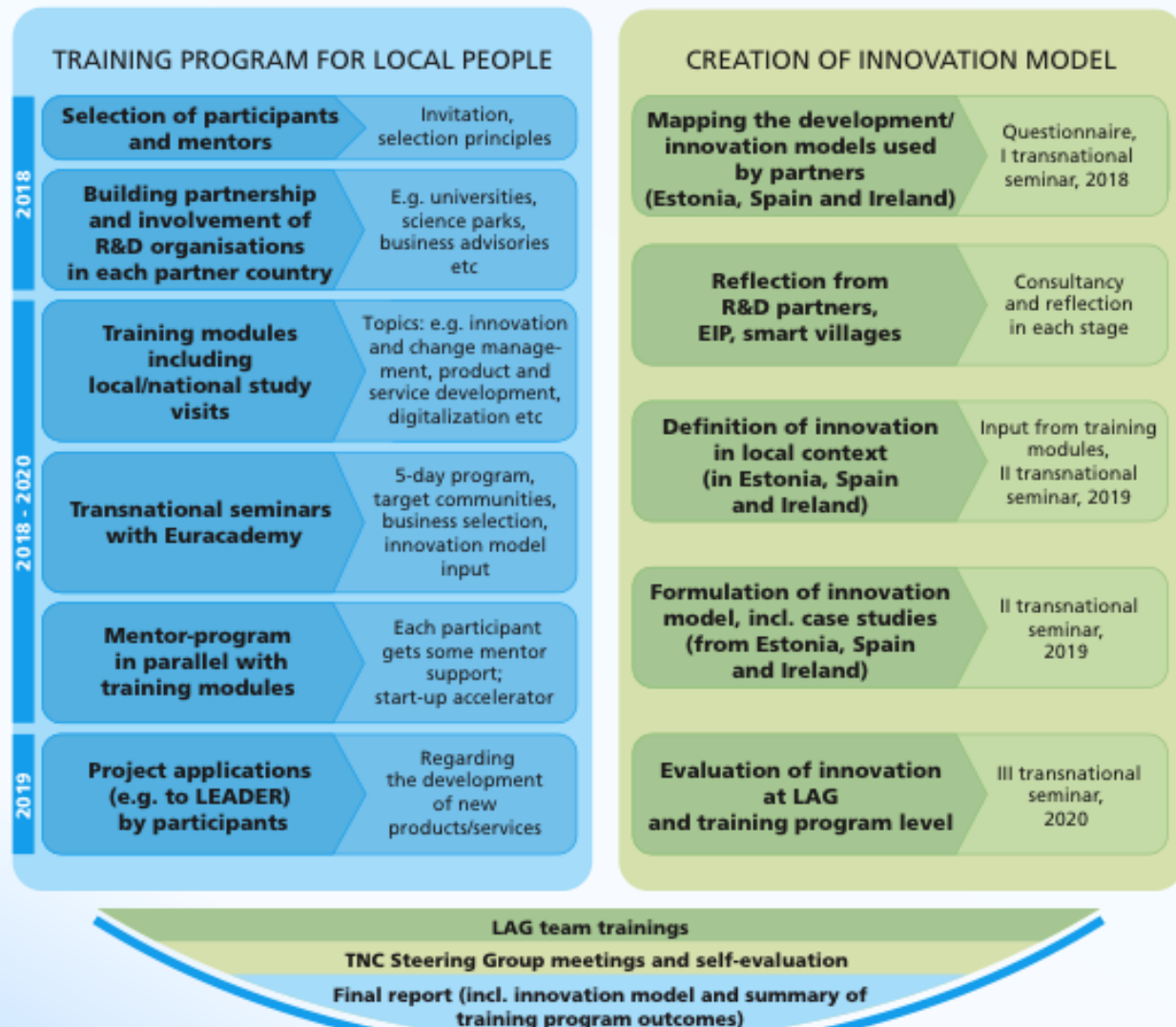
Development Strategy for 2014-2020



TNC project: "Searching for innovation and smart solutions"

Participatory LEADERSHIP methodology

(e.g. Circle, Open Space, World Café)



Programme and practicalities

- Programme - short introduction, locations map
- Study visits
- Contact persons

Programme and practicalities

Location map

Programme and practicalities

Study visits:

18th of September afternoon:

19th of September full day

Programme and practicalities

Contact persons:

Ederi +372 56636264

Kristiina +372 53409873

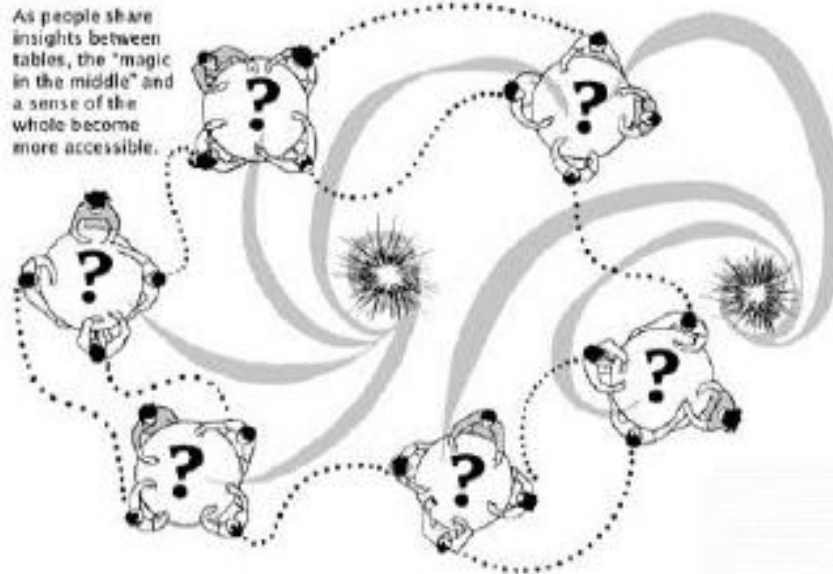
World café

General Flow of a World Café:

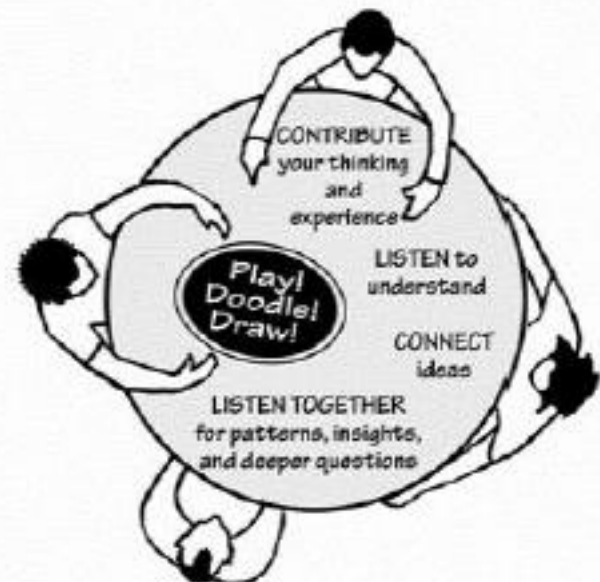
- Seat 4-5 people at café-style tables or in conversation clusters. Set up progressive rounds of conversation, usually of 20-30 minutes each—**have some good questions!**
- Ask one person to stay at the table as a “**host**” and invite the other table members to move to other tables as **ambassadors of ideas and insights**.
- Ask the table **host to share key insights**, questions, and ideas briefly with new table members, then let folks move through the rounds of questions.
- After you’ve moved through the rounds, allow some time for a **whole-group harvest of the conversations**.

World café

As people share insights between tables, the "magic in the middle" and a sense of the whole become more accessible.



CAFÉ ETIQUETTE
FOCUS
on what matters!



World café - I

QUESTION:

1. What is innovative?

What we can recognize with our senses - what we can see, listen, feel, taste?

2. What are the most important components of innovation?

3. Please bring out 3 most important components.



Tartumaa hingab Emajõe rütmis

Thank you!