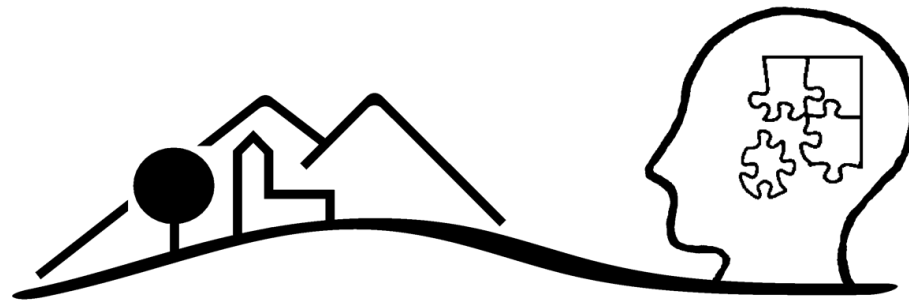


A black and white photograph of a rural landscape with rolling hills, fields, and a long bridge in the distance.

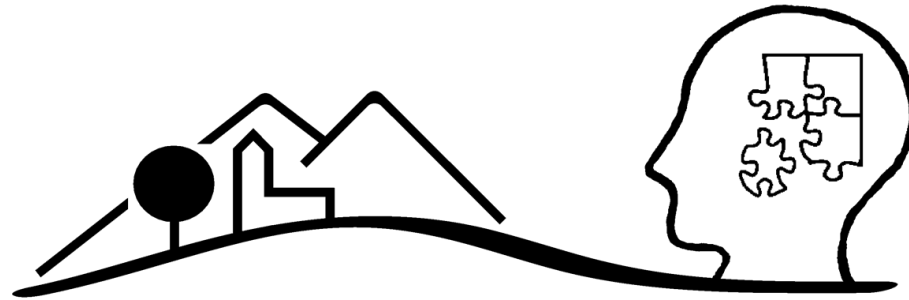
# What people give value to in their surroundings

## Public involvement according to the ELC





# The Role(s) of Landscape Experts (who are they?)



# Chapter 1

**ELC:**

**Involve all views**

in all phases of decision making regarding landscape



# Kassel: Bergpark Wilhelmshöhe World Heritage

## ICOMOS experts apply UNESCO criteria



**Public involvement & support considered**

© picture-alliance/dpa

# “Experts speak strongly in favor of protecting the cemetery” (media)



Mr. Huber of the Augsburg’s Municipal Monument Protection and Mr. Hermann from the Bavarian State Agency for Monument Protection visiting Kriegshaber-Pfersee cemetery

<http://jhva.files.wordpress.com/2009/06/imga03781.jpg?w=450&h=318>

ELC:  
the views of all to be considered,  
not just the views of scientific and political elites



<http://jhva.files.wordpress.com/2009/06/imga03781.jpg?w=450&h=318>

# Chapter 2

## ... more than (what) meets the eye



## 3 Case Examples

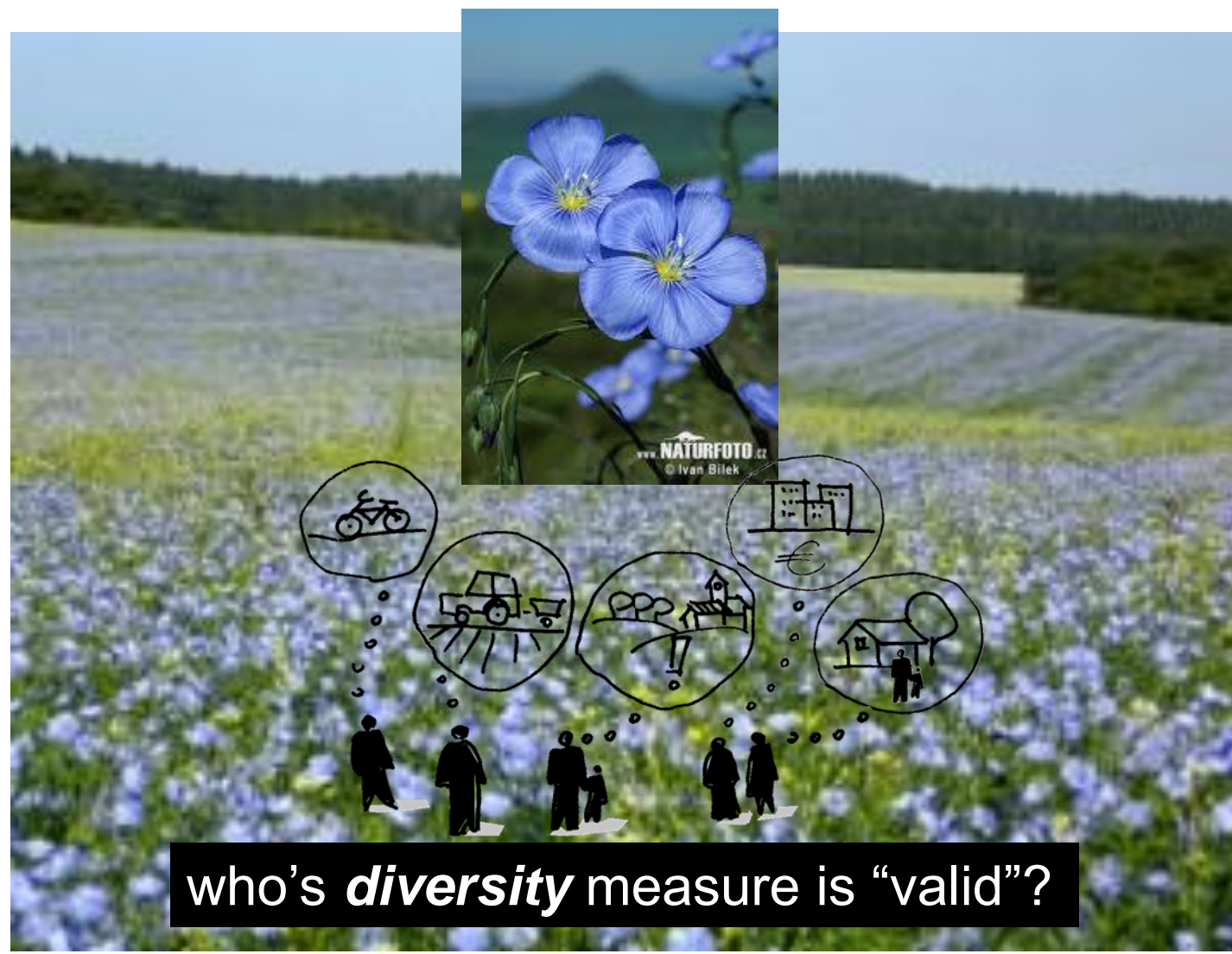
- Land classification for official policy; who's idea of *natural* is “correct”?
- Dispute over golf course project; who's *diversity* measure is “valid”?
- Application for a ‘Landscape Park’; who's *reference* shall “prevail”?



# Mulch Sowing System



# The Blue ‚Allgäu‘



who's *diversity* measure is "valid"?

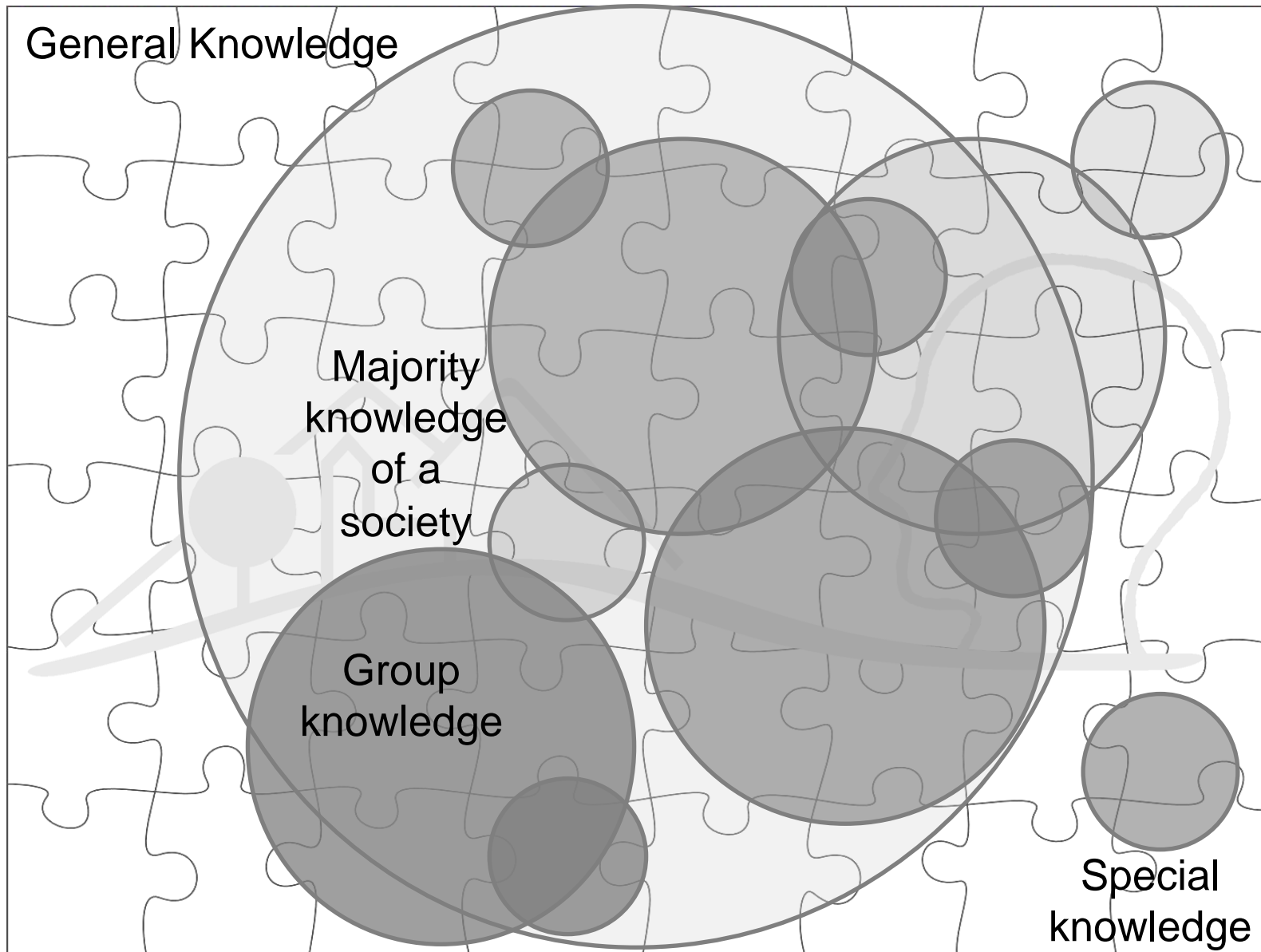
[http://www.konstantin-kirsch.de/wp-content/uploads/2009/05/leinleindotter-blueete\\_02-300x225.jpg](http://www.konstantin-kirsch.de/wp-content/uploads/2009/05/leinleindotter-blueete_02-300x225.jpg)

# A new ‚Landscape Park‘



## 3 cases illustrate ...

- ... how separate discourses have different effects on landscape assessment;
- ... the power of preconceived landscape quality ideas, exercised by experts;
- ... that perpetuating certain images and values is supported by “prevailing opinions” that dominate expert discourses.

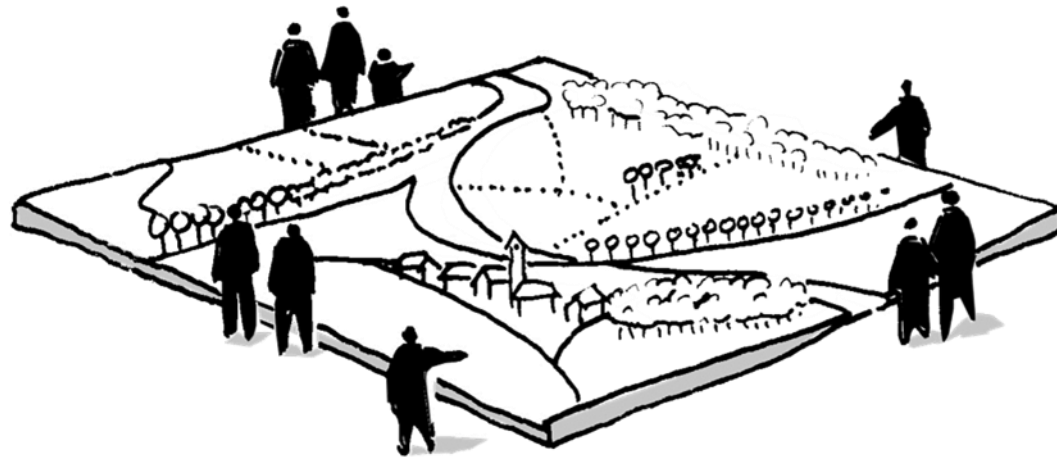


# Social Learning

## discourse dependency

# Chapter 3

Involving all views:  
practical challenges of changing expert roles

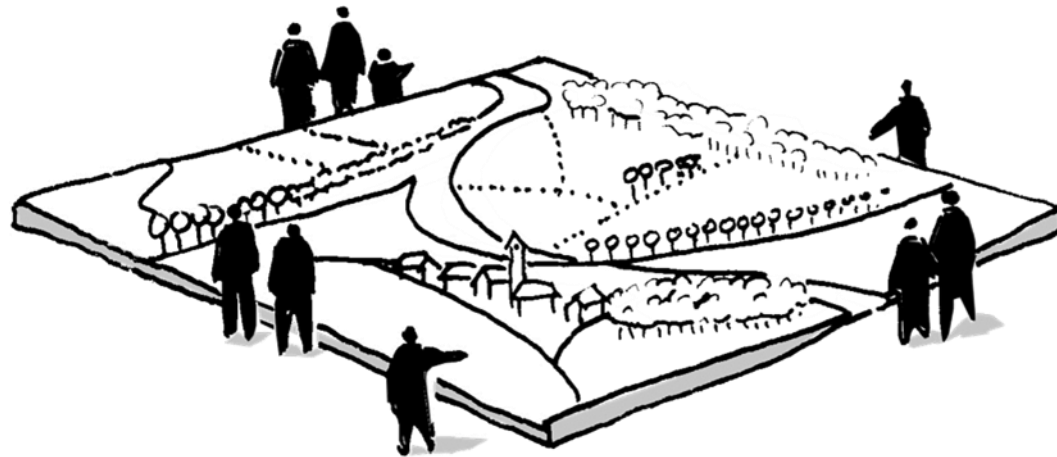


# Example 4

## Rural Development in Colgone-Bonn Region

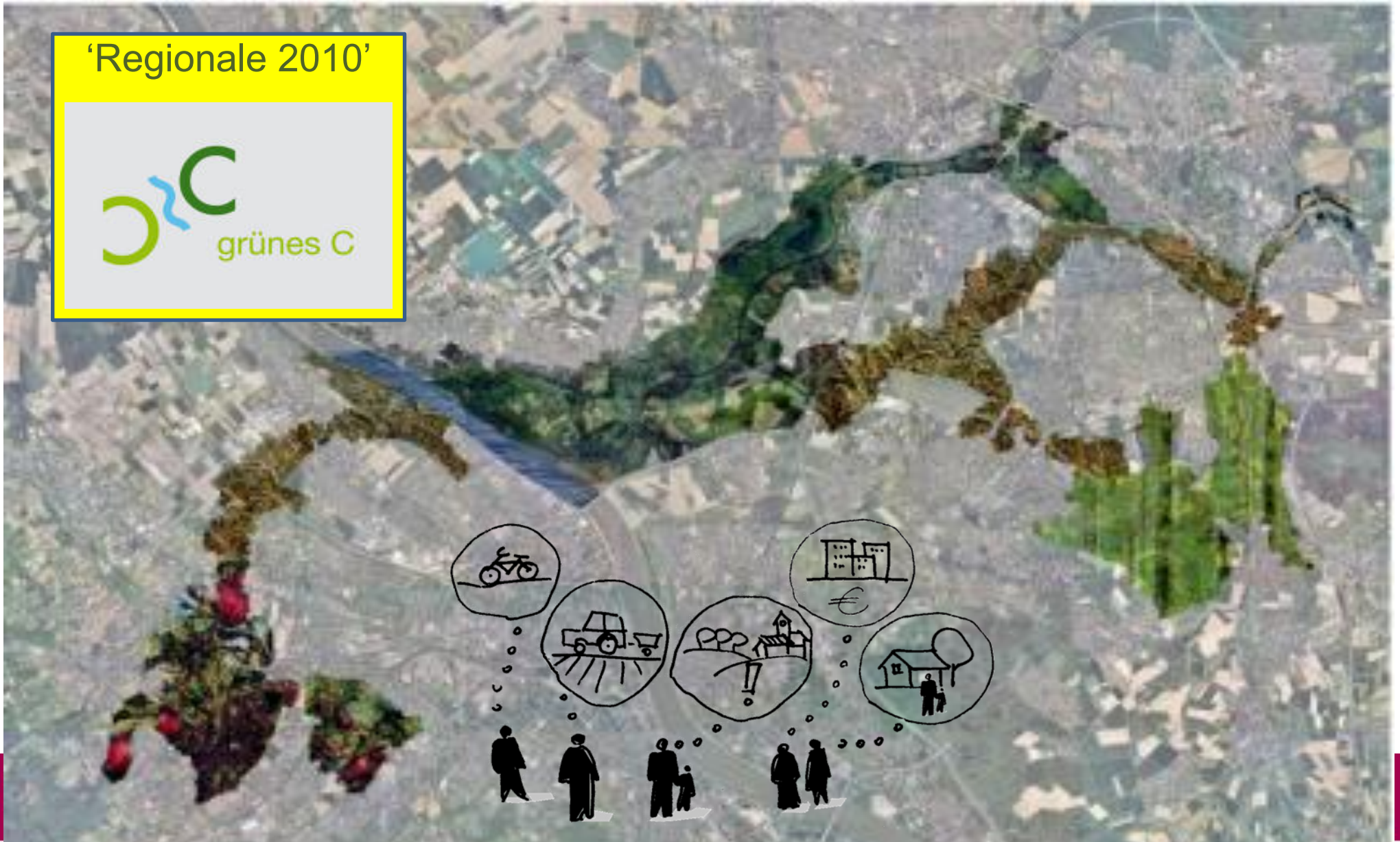
:

### Inspiring future-discussions through design



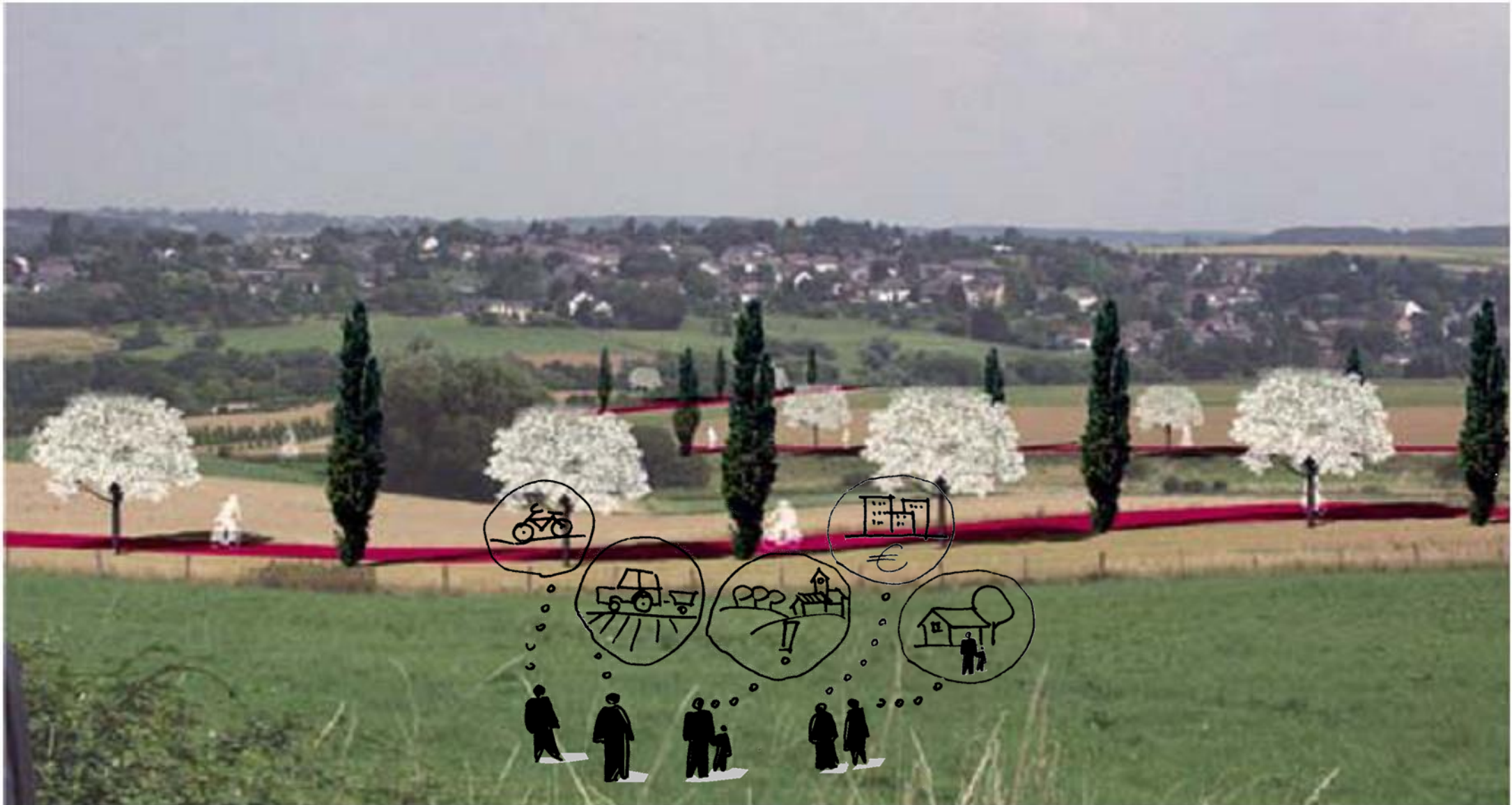
# Branding: „Green C“

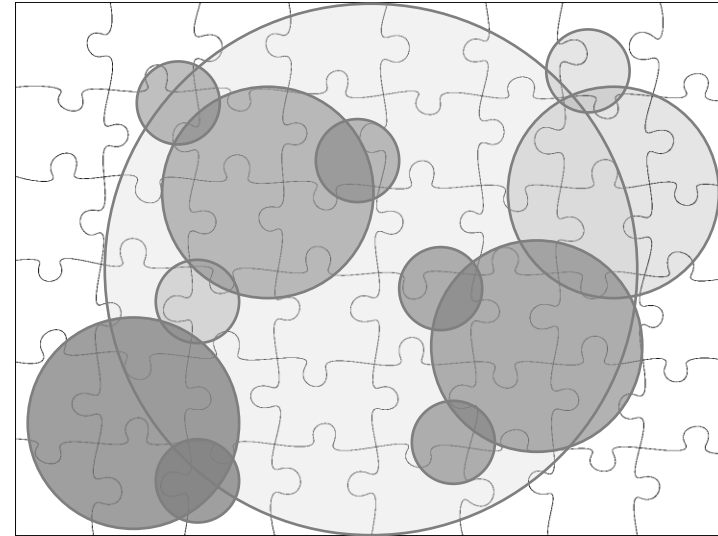
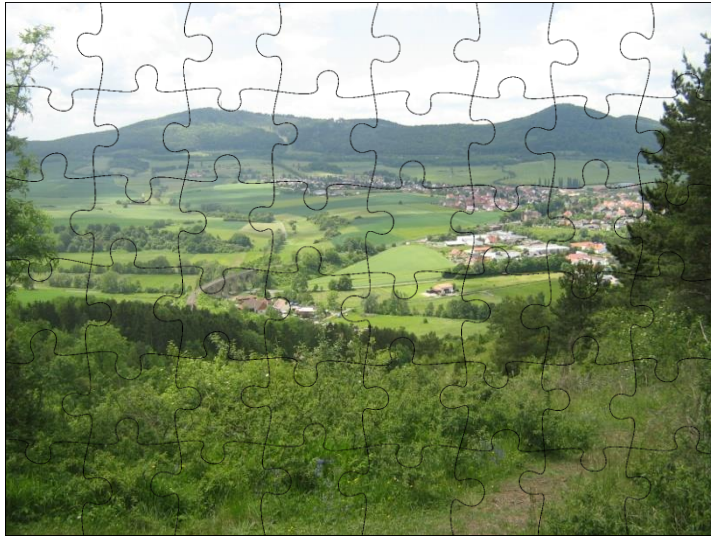
‘Regionale 2010’





# „Link“-Proposal for „Grünes C“ design



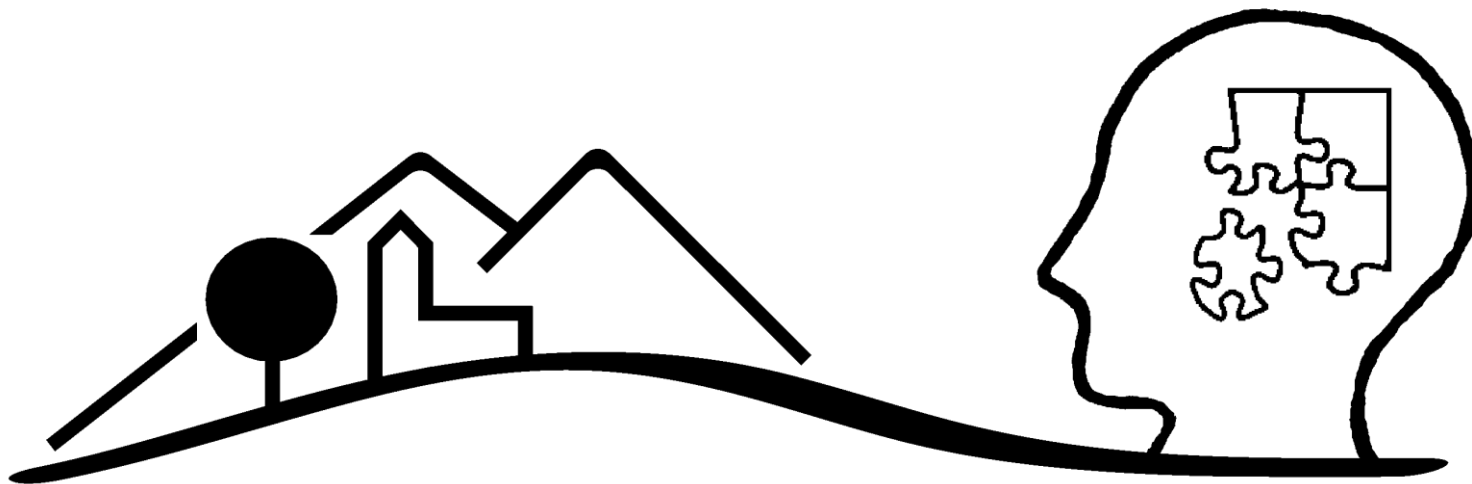


## Shared Landscape Knowledge



# Chapter 4

## Mindscape & Landscape Paradoxes



# Landscape paradoxes

- Policy-Project Paradox of public participation
- Paradox of depending on but not believing in public involvement as a Good Thing

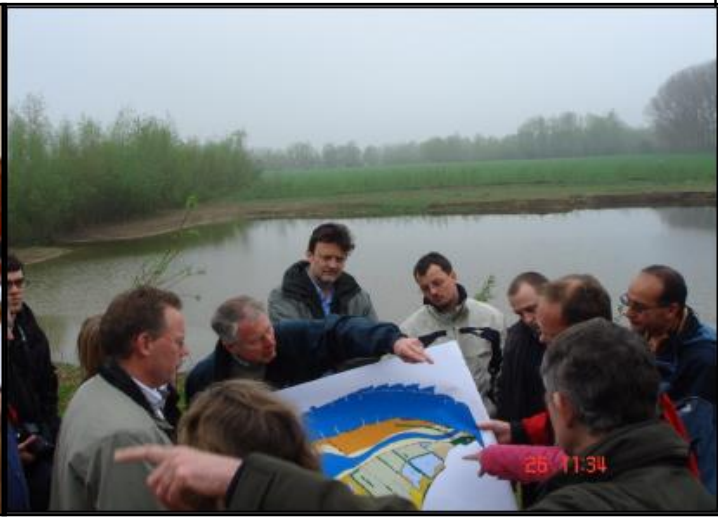
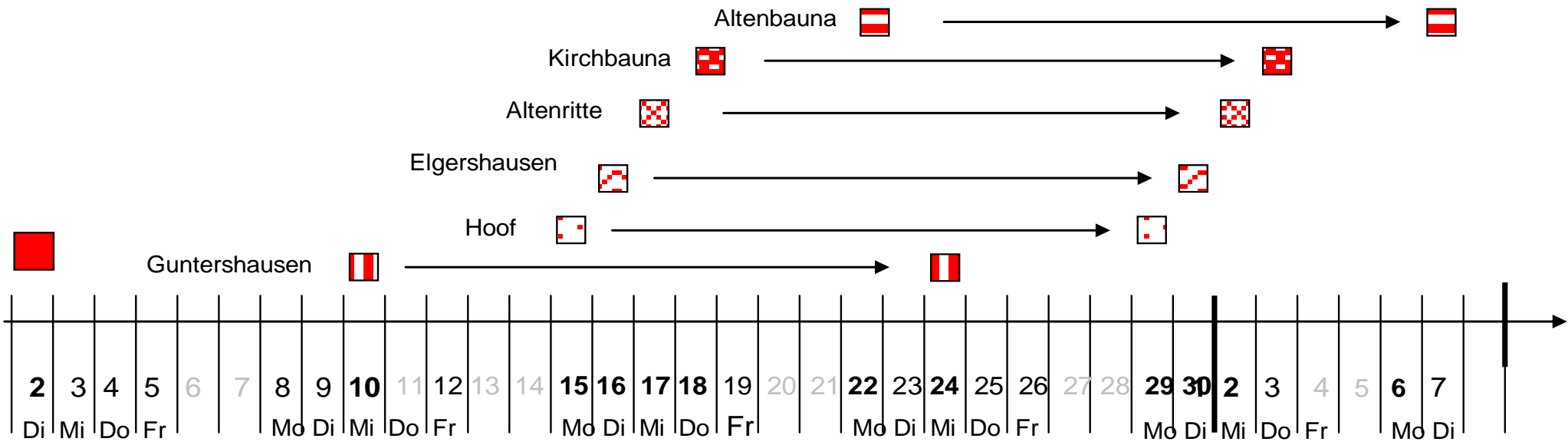
How might it be possible to commit to publicly supported and long term policy making?

# Resolving paradoxes



- exploring how the regional scale might be used efficiently and effectively;
- prospect-oriented and project-driven, ‘regional project’;
- ‘design’ to facilitate governance and co-production.

# linking regional, local and project scales



# What people give value to in their surroundings

... to be continued!

