



Public visioning of future landscapes in the context of rural development

David Miller, James Hutton Institute



with Jose Munoz-Rojas, Inge Aalders, Jane Morrice, Gillian Donaldson-Selby, Chen Wang, Paula Horne, Marie Castellazzi, Lee-Ann Sutherland

Muir of Dinnet: 1890



Understand social, economic and biophysical influences on land use and landscape change, and the trade-offs made in decision-making



Photograph courtesy: Innes Miller

Tourism

Landscape: "An area, as perceived by people, whose character is the result of the action and interaction of natural and/or human factors." (Council of Europe 2000)



Transport



Energy



Housing



Forestry



Farming



Tourism

- Breadth of policy contexts increasing rapidly
- Landscape is a cross-cutting theme



- Land based businesses working with nature to contribute more to Scotland's prosperity
- Responsible stewardship of Scotland's natural resources delivering more benefits to Scotland's people
- Urban and rural communities better connected to the land, with more people enjoying the land and positively influencing land use

Delivers to

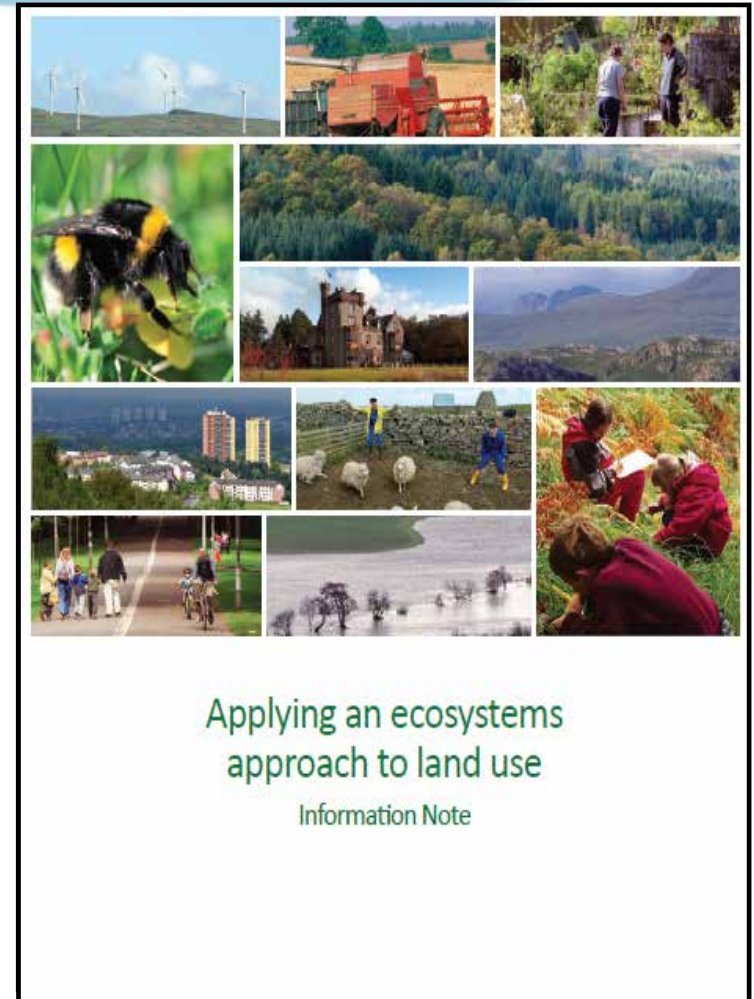
- Rural Development Programme
- Biodiversity Challenge 2020
- Landscape Convention

Principle I:

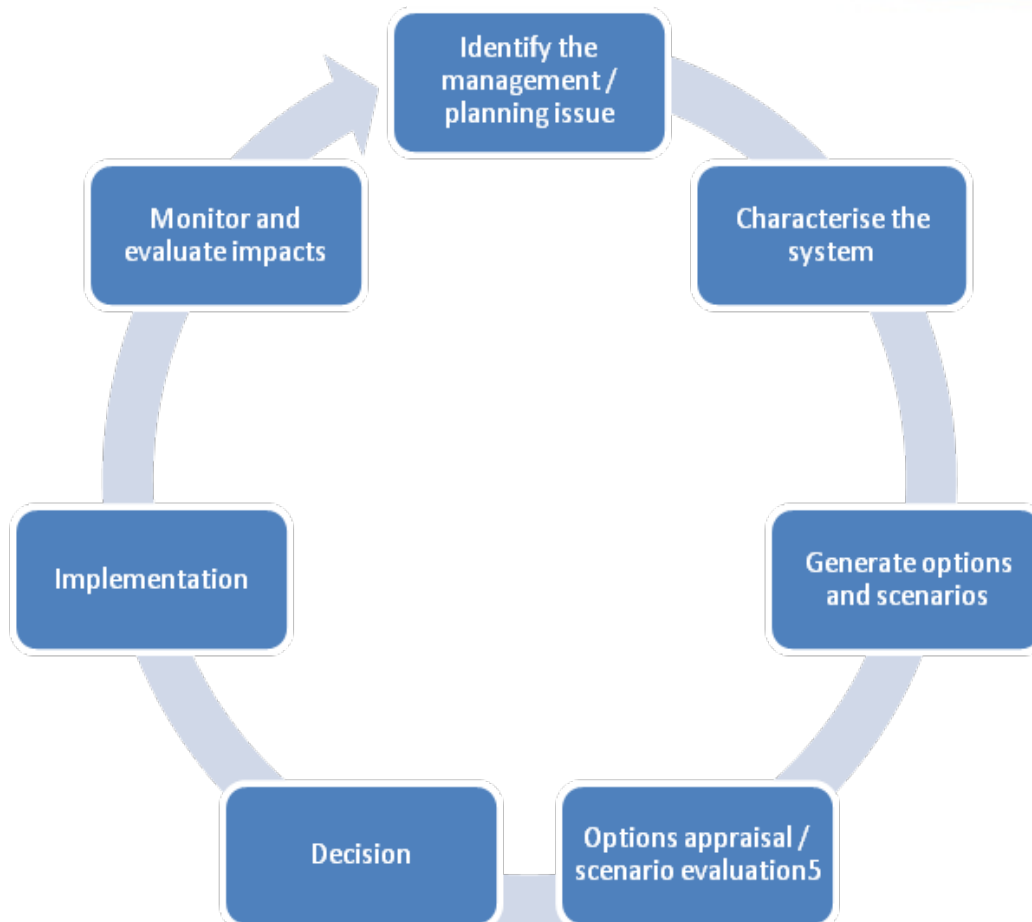
‘People should have **opportunities** to contribute to debates and decisions about land use and management which affect their lives and their future’

Proposal 12:

Identify and publicise **effective ways** for communities to contribute to land-use debates and decision-making’



Source: Scottish Government



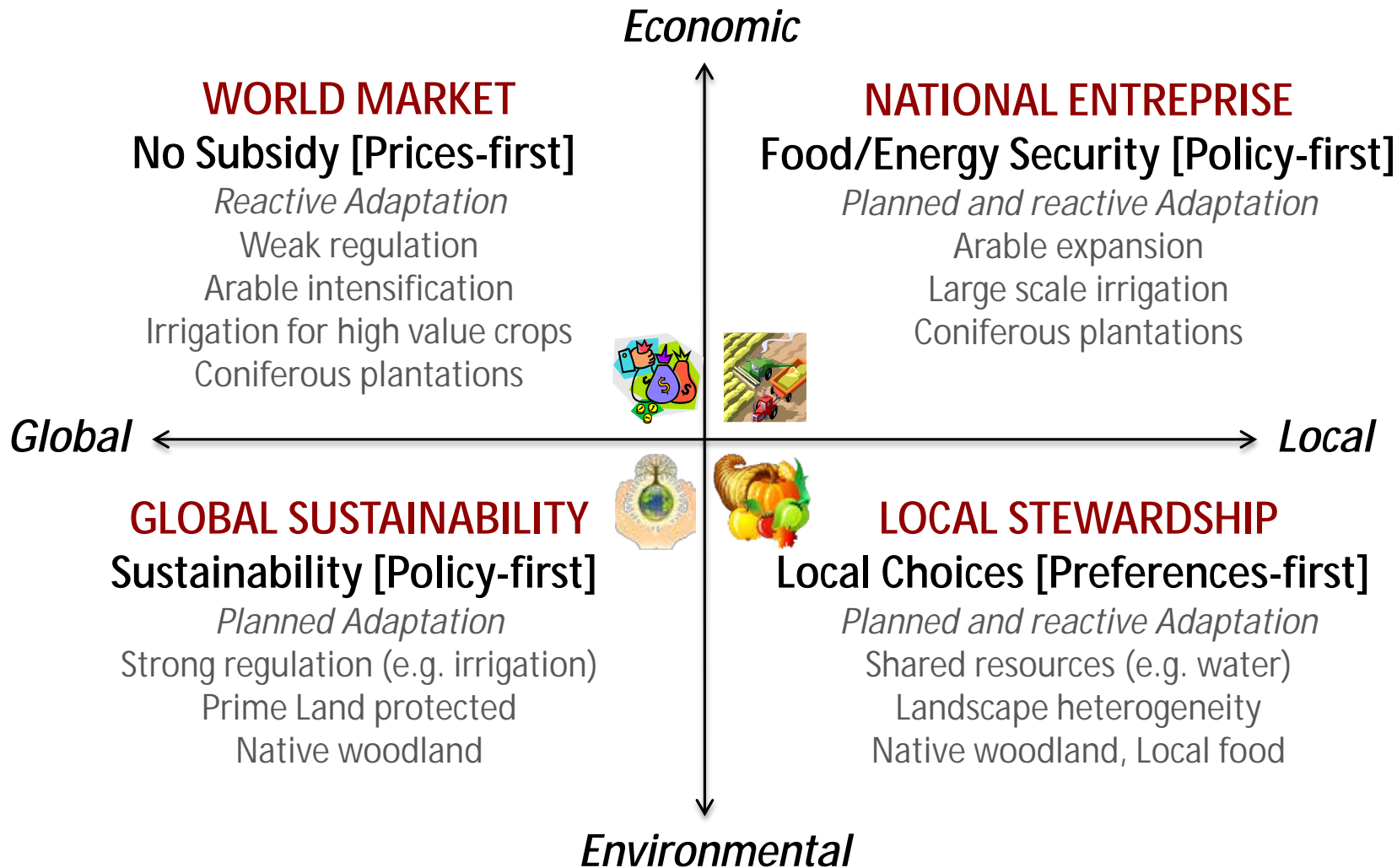
“Integrated management of land, water and living resources in an equitable way”

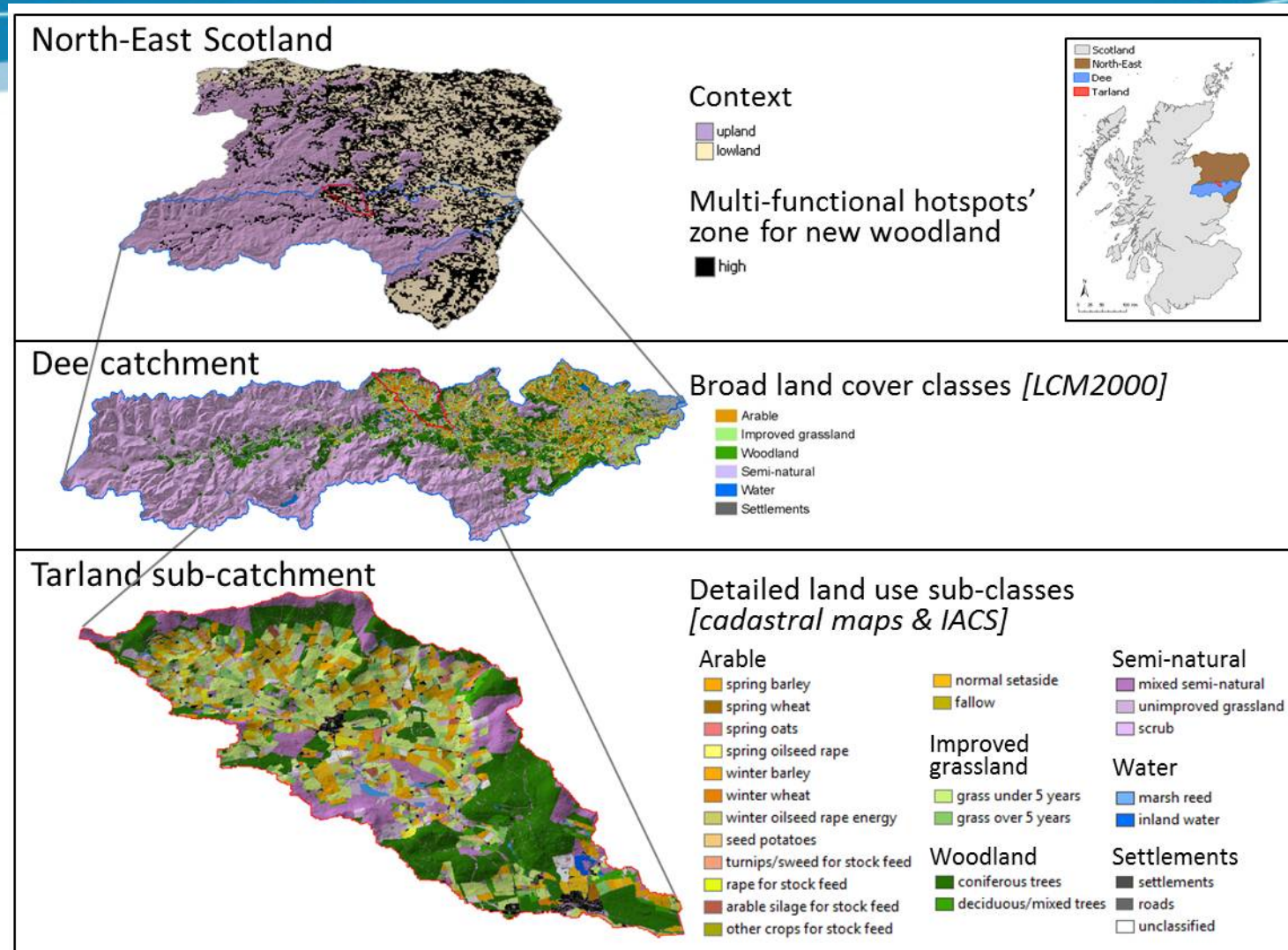
Source: UN Convention on Biological Diversity, 2000.

- People centred approach
- Participation at key stages to develop resilience

Source: Aspinall et al. (2010)

Example 1: Scenarios + Land Use Change Storylines





Scenarios, Services and Trade-offs

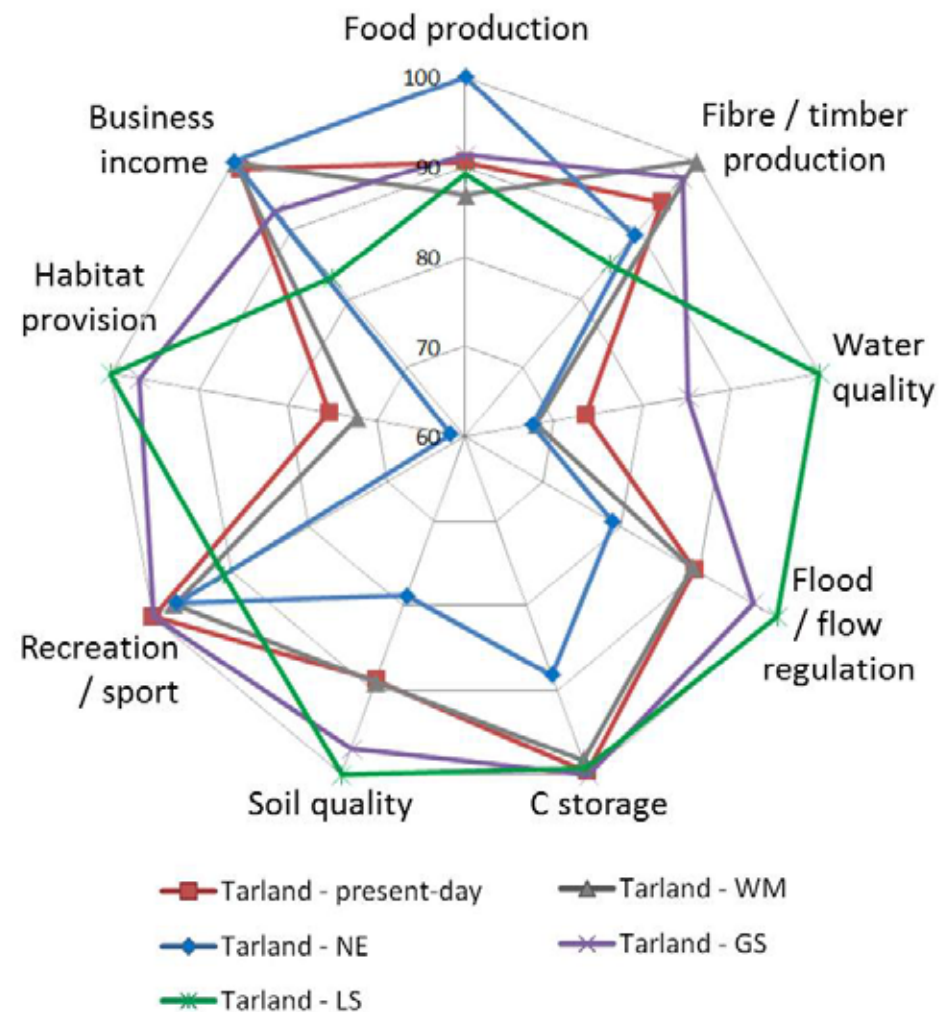
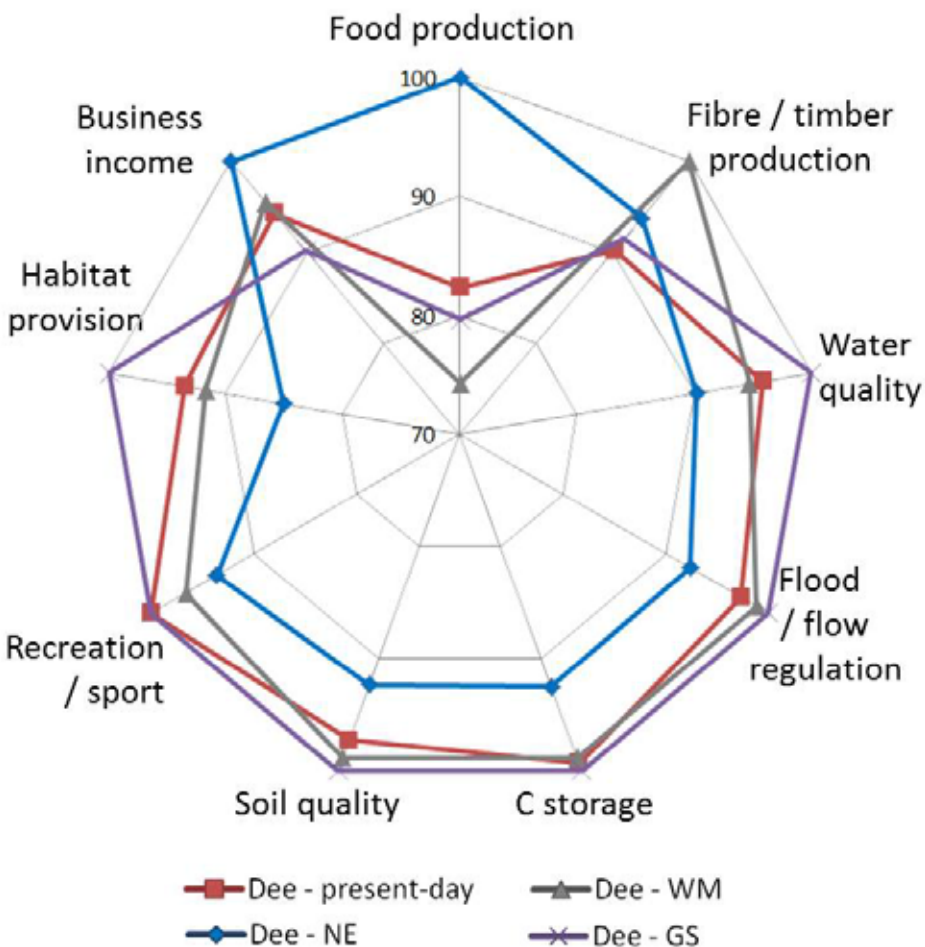
DEE CATCHMENT

TARLAND

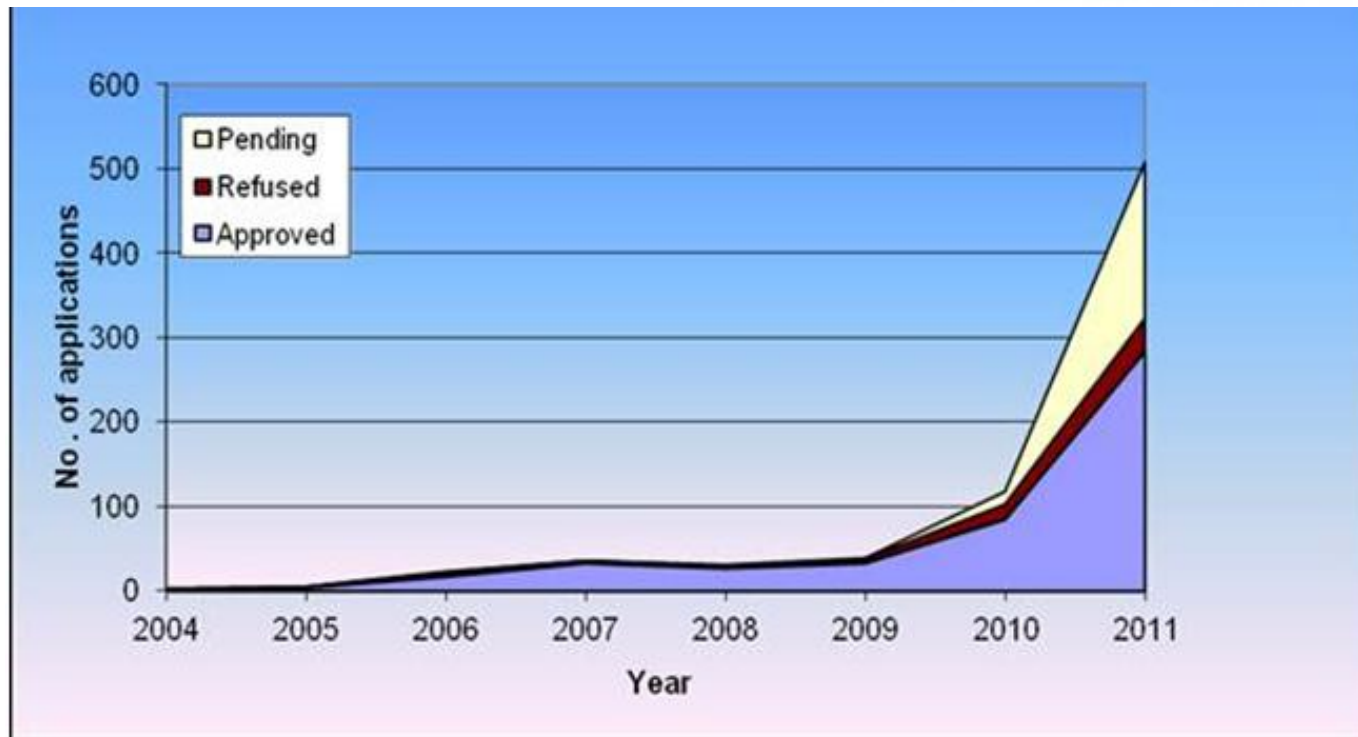
2050 Scenarios

World Markets (WM)

National Enterprise (NE)



Actual Change: On-farm Wind Energy Production



Applications for turbine developments received by Aberdeenshire Council



- | Farm diversification
 - | Stable income
 - | Minimal disruption
- | Return on investment
 - | Succession
- | Resource awareness
 - | 'the energy is running out'
 - | future proofing the farm
 - | environmental benefit
- | Community Benefit





Local and Non-Local Public Responses

- Greatest preferences for 'Local Stewardship'
- Example of **non-local** opinions:
 - medium scale windfarms on hills, woodland on lower slopes
- Example of **local** opinions:
 - more woodland around villages, smallscale wind turbines, energy woodland away from village, 'river hydro'



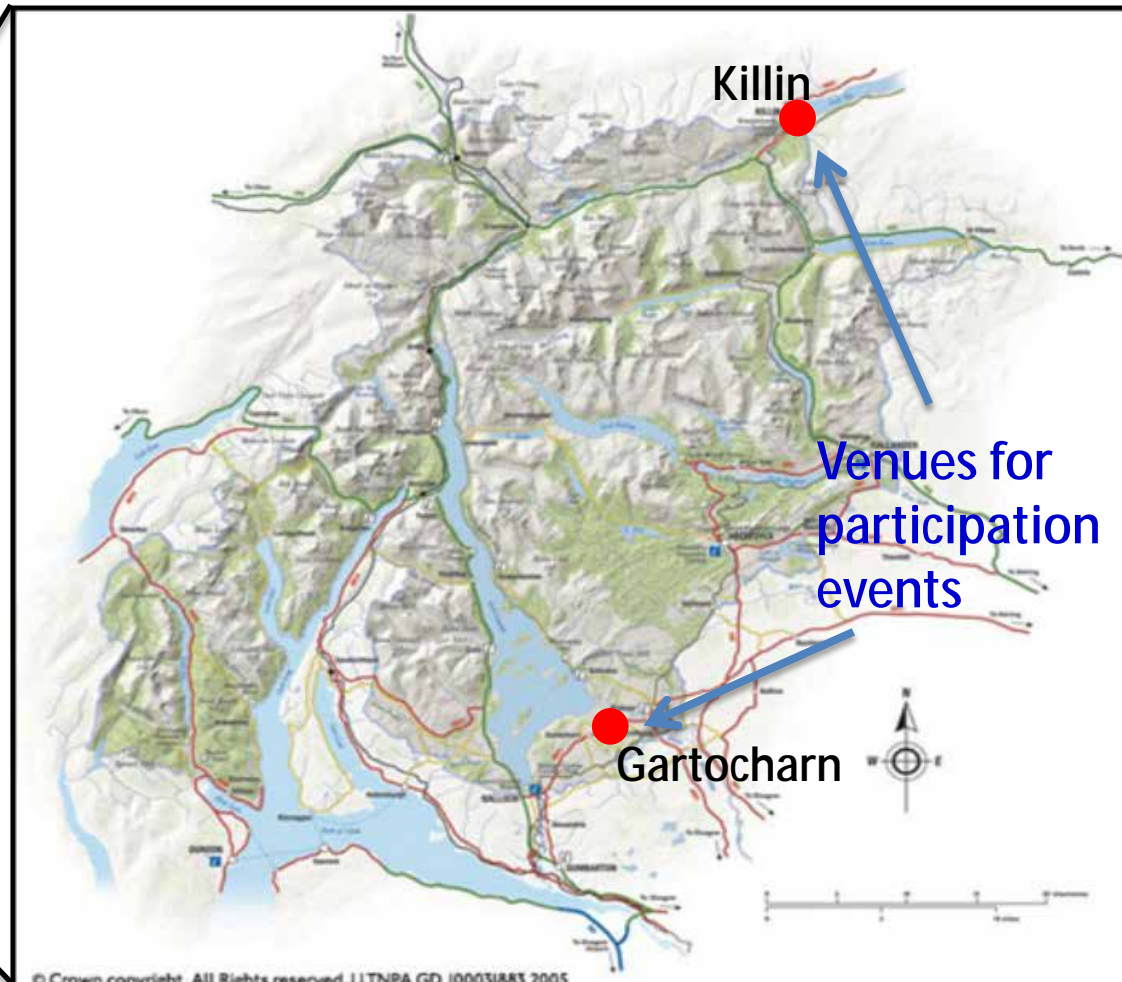
Remote opinion - Birmingham



Local opinion - Ballater Primary School

- **Farm diversification**
 - Energy security
 - Income generation
 - Environmental benefits
- **Rural development**
 - Community Income (e.g. 1.3 MW wind turbine 450,000 Euros per year; community = 1000 people)
 - Environmental improvements (e.g. water quality)
 - Amenities (e.g. woodland)
 - Equity (e.g. access, land ownership/tenure)
- **Future alignment with the EU Rural Development Programme?**

Loch Lomond and The Trossachs National Park

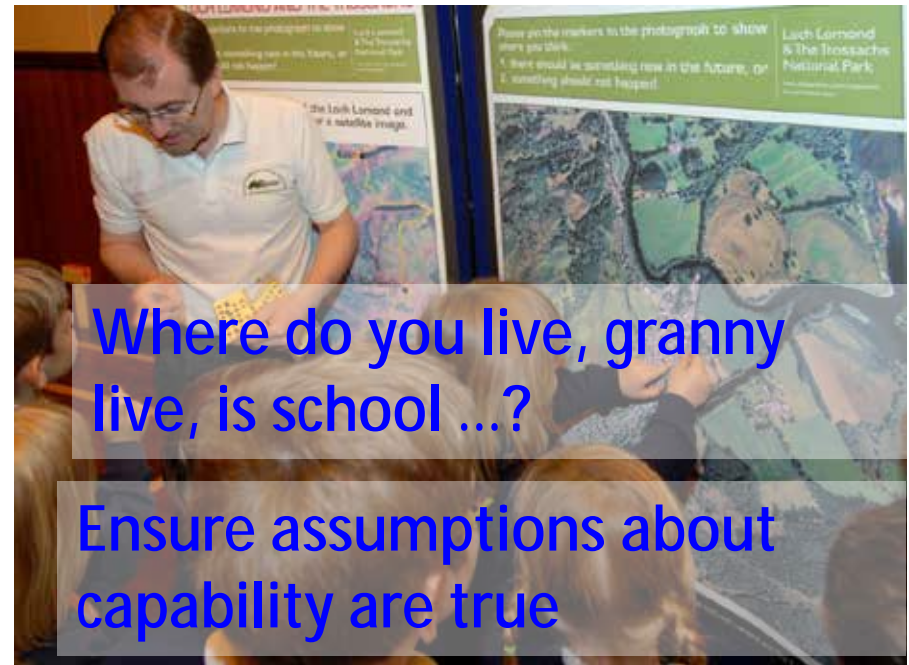


Public participation in visions for the National Park



Participation: Purposes?

- Research
- Consultation
- Awareness raising
- Communicating results
- Feedback



- | Energy: small not large scale wind, more hydro
- | Woodland: Replace lost trees, no plantations
- | Facilities: Clothes and food shops (NOT MacDonalds/Burger King!)

- | Concern: Dentist 1 hour away, no ambulances, affordable housing



Lesson: Link to needs i.e. teaching curriculum, act at right stage in planning process



Community Groups, Schools and Councillors in Killin



Identifying Issues and Locations

In collaboration with Loch Lomond and The Trossachs National Park Authority

Pupils:

Enjoyed event

94%

Learnt something new

78%

Learnt something of use in class

68%

Teachers:

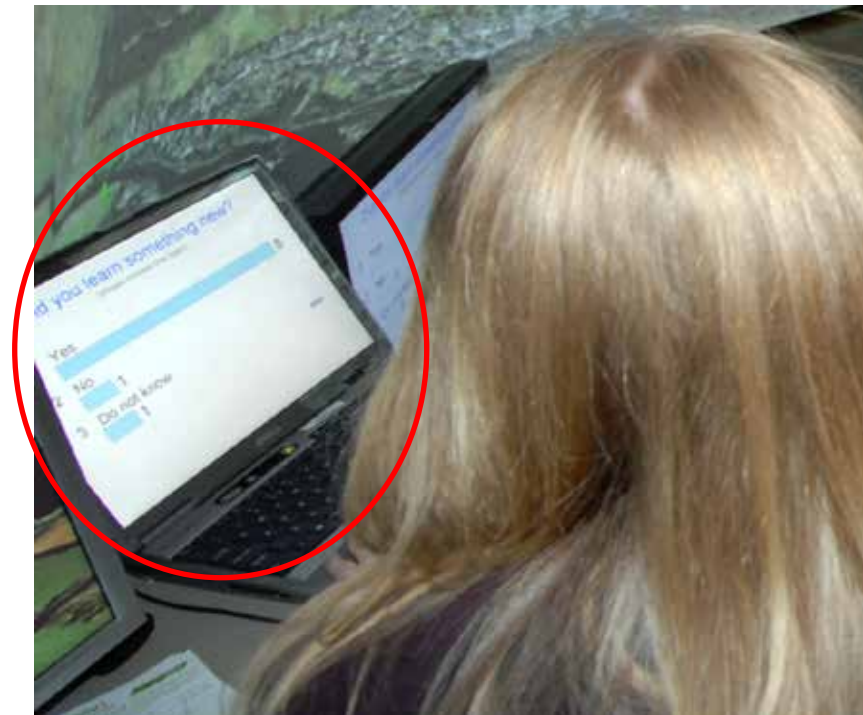
Relevance Very High

Follow-up in class

Conflict in countryside

Landscape interpretation

Direct link to Curriculum for Excellence

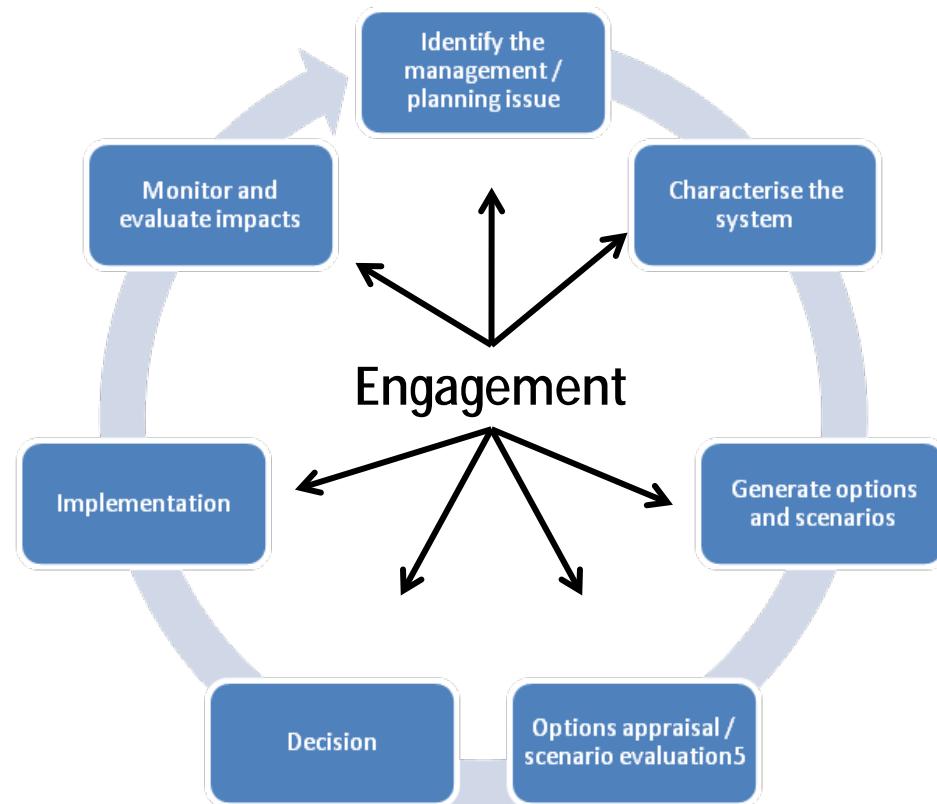


n Bequeath to future generations

- | Vibrant communities - hopefully
- | A contemporary landscape character

n Timing: Opportunities to intervene?

- | Policy: 23 national elections
- | Plans: 8 development plans
- | Natural heritage: c.2 forestry cycles
- | 1 vote on Scottish independence!



- Support flexibility in spatial rural development
- Increased need to future proof our priorities
- Building trust between stakeholders – policy, planner, land manager, public
- Mismatches in planning time horizons between stakeholders
- Improve means of harnessing imagination of the young(er), and capabilities of education





Thank you!



The James
Hutton
Institute



www.emu.ee



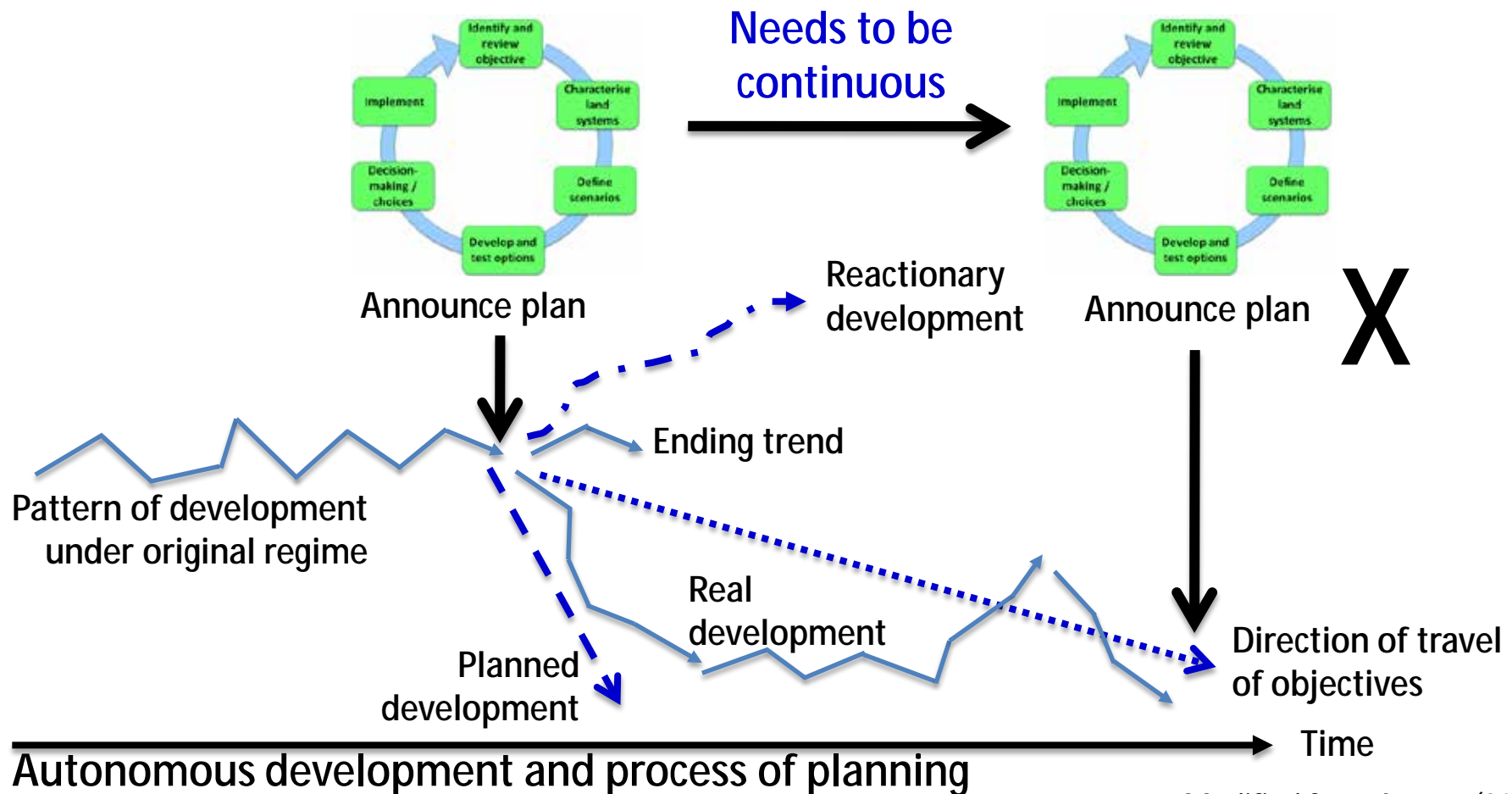
Scenario:

- You are now 18
- You will become a land manager/ planner/ developer...
- In 2063 you have just retired
- In 2057 it was 100 since the Treaty of Rome

Questions:

- What land use/ landscape decision do you most regret?
- Which land use / landscape decision you made gives you most pride?
- What is meant by Rural Development in 2063?
- What is your advice to the 18 year old future planner, land manager etc. in 2063?

Identify - Characterise - Scenario – Options - Decision - Implement





By George Washington Wilson, c1900
Courtesy of University of Aberdeen Library

Scenario:

- You are now 18
- You will become a land manager/ planner/ developer...
- In 2100 you reflect on your life (having retired at 105!)

Questions:

- What land use/ landscape decision do you most regret?
- Which land use / landscape decision you made gives you most pride?
- What is meant by Rural Development in 2100?
- What is your advice to the 18 year old future planner, land manager etc. in 2100?

Scenario:

- Present scenarios from different viewpoints
- Vote on landscape preference

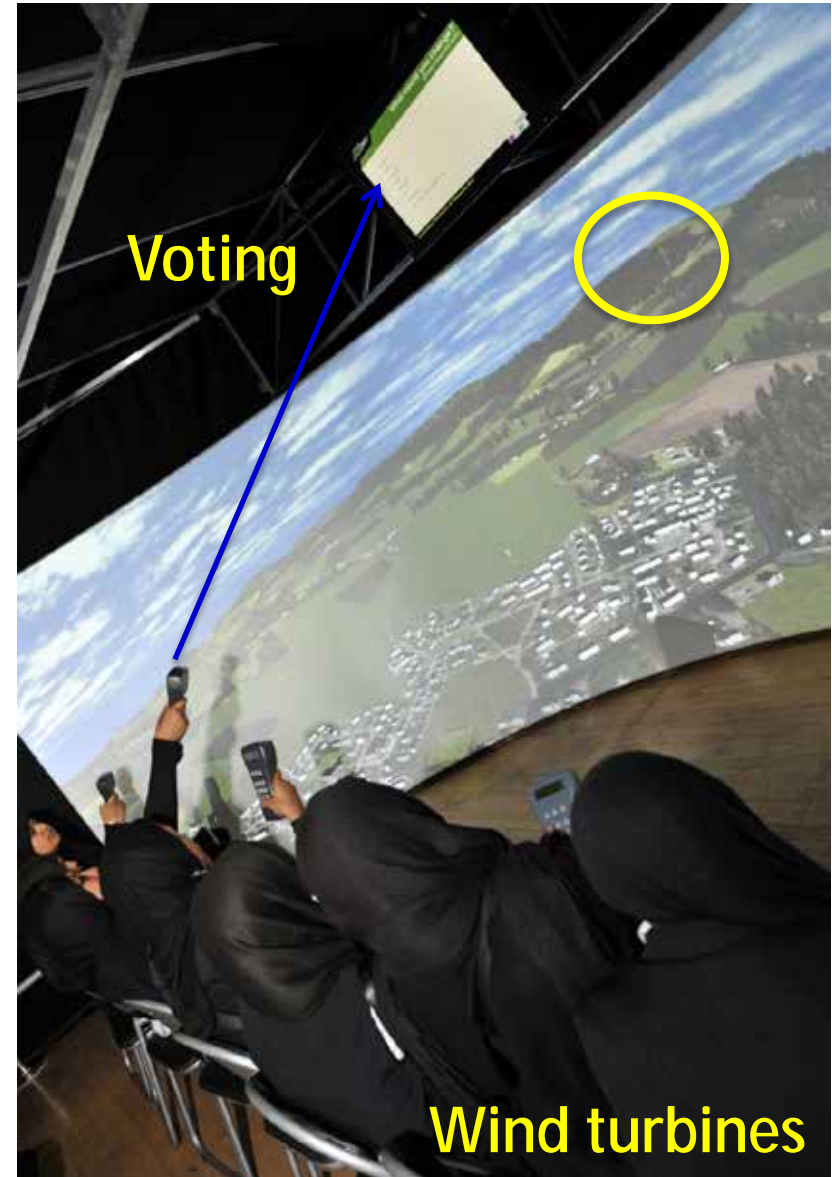


Professionals –
Familiar with location, unfamiliar with views
Edinburgh



Public –
Familiar with location, unfamiliar with
views Edinburgh

- | Select priority topics (e.g. renewable energy, woodlands, housing, transport, conservation)
- | 'Drag and drop' feature into place
- | Discussion of issues, voting on audience agreement



Public Assessment of Change

- | **Present scenarios from different viewpoints**
- | **Vote on landscape preference**



Professionals –
Familiar with location, unfamiliar with views
Edinburgh



Public –
Familiar with location, unfamiliar with views
Edinburgh

Public Discussion

- | Select priority topics (e.g. renewable energy, woodlands, housing, transport, conservation)
- | 'Drag and drop' feature into place
- | Discussion of issues, voting on audience agreement

